












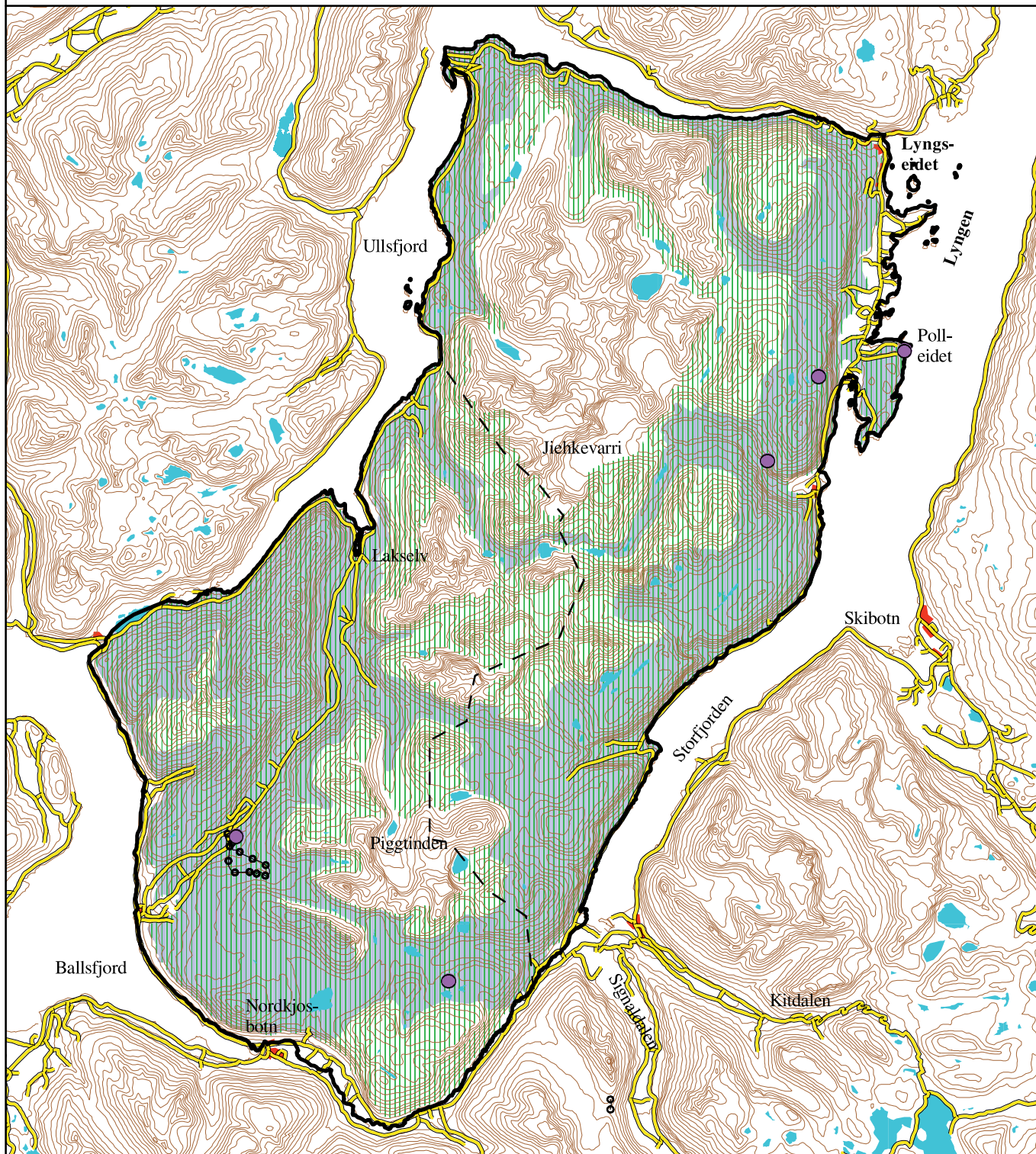
Kart til Fagutvalgets rapport

Tegnforklaring til kart i Norge

	Beitehage
	Sperregjerde
	Foreslått distriktsgrense
	Distriktsgrense
	Vei
	Høydekurver
	By/ tettbebyggelse
	Vann
	Sommerbeite
	Beite med lav
	Reindrifftsanlegg

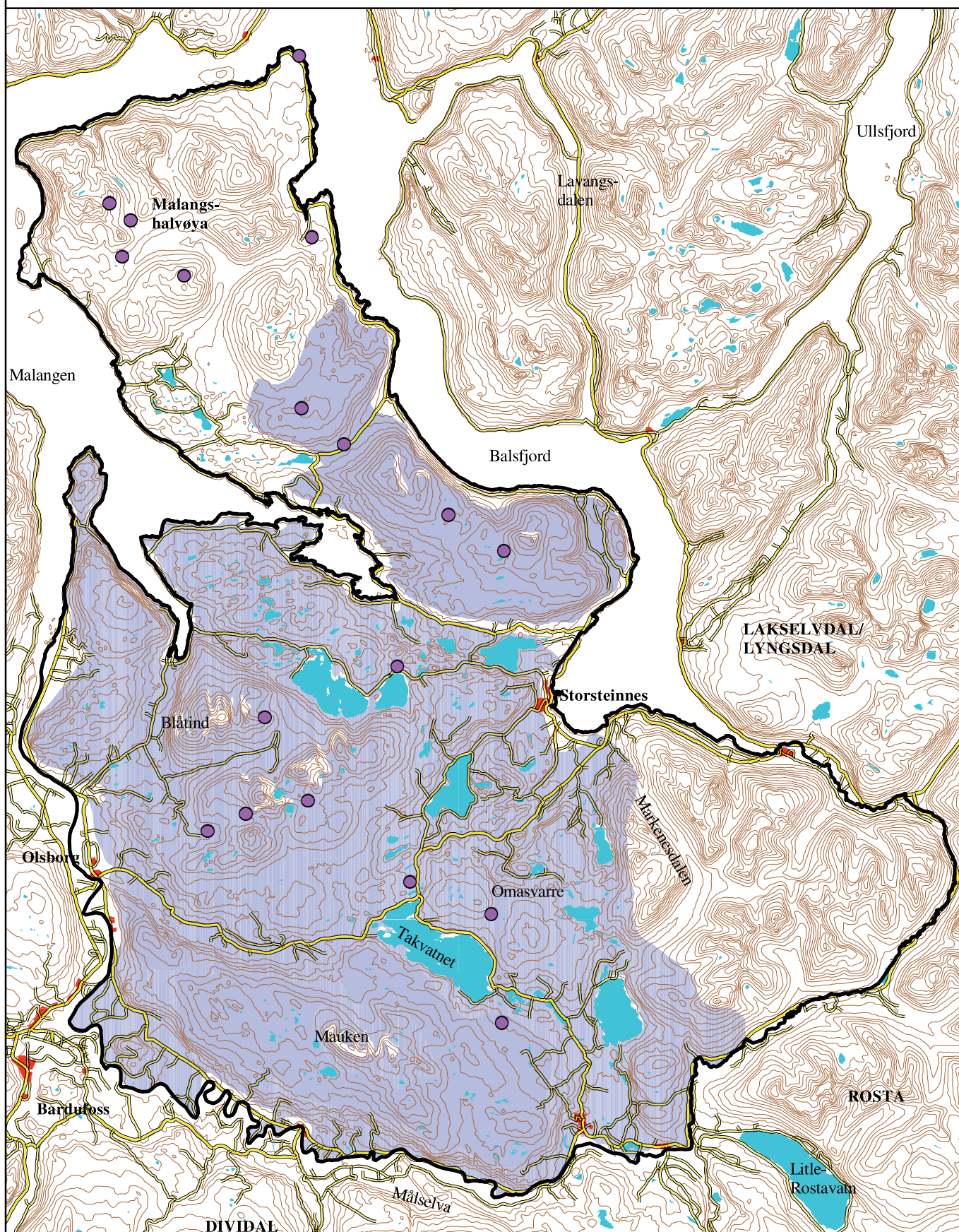
Lakselvdalen/Lyngsdalen reinbeitedistrikt
Distriktets beskrivelse av sommerbeite
og beite med lav.
M 1 : 250 000

0 3 6 9 12 15 kilometer

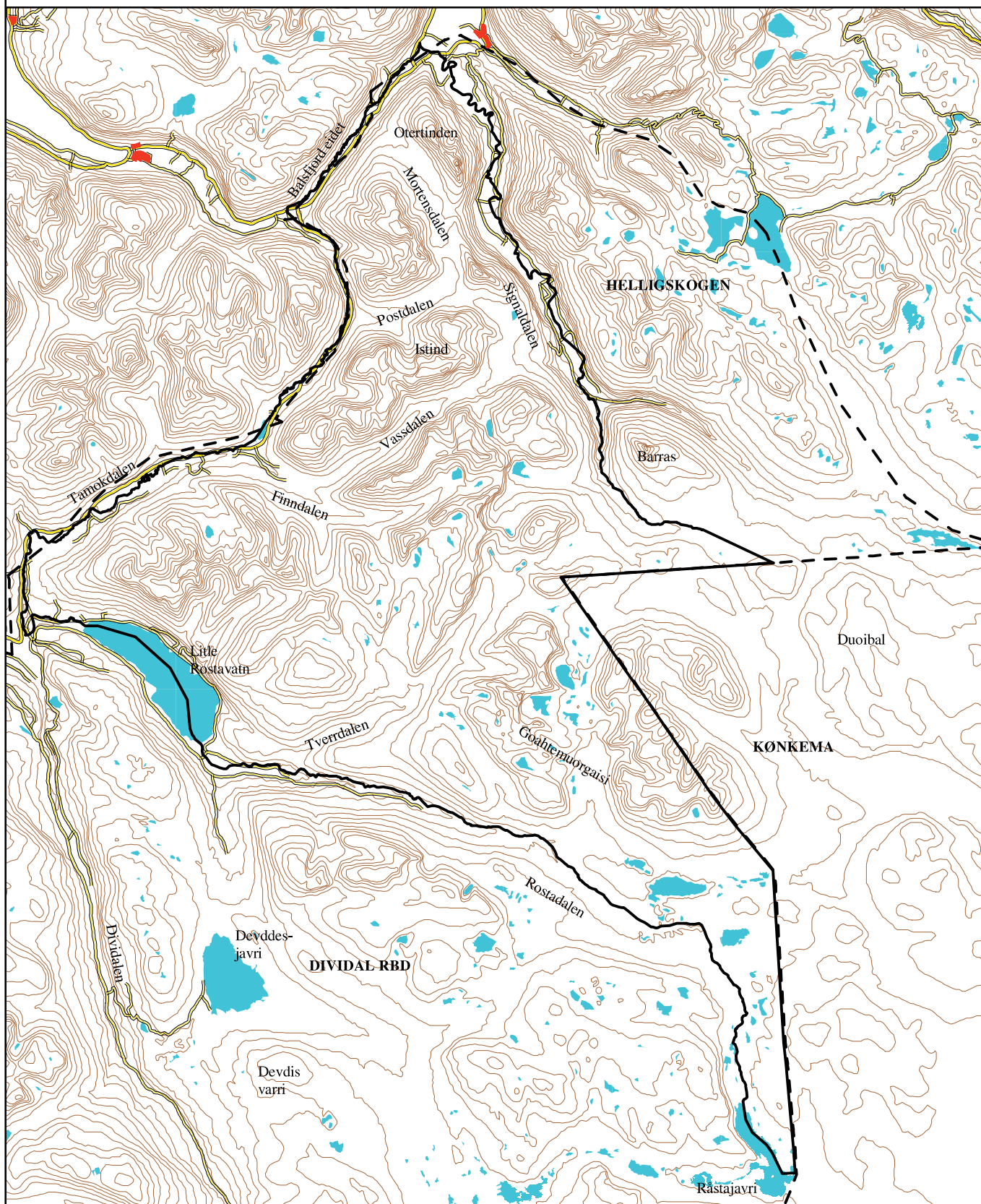
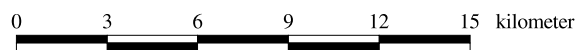


Mauken reinbeitedistrikt
Distriktes beskrivelse av beite med lav.
M 1 : 300 000

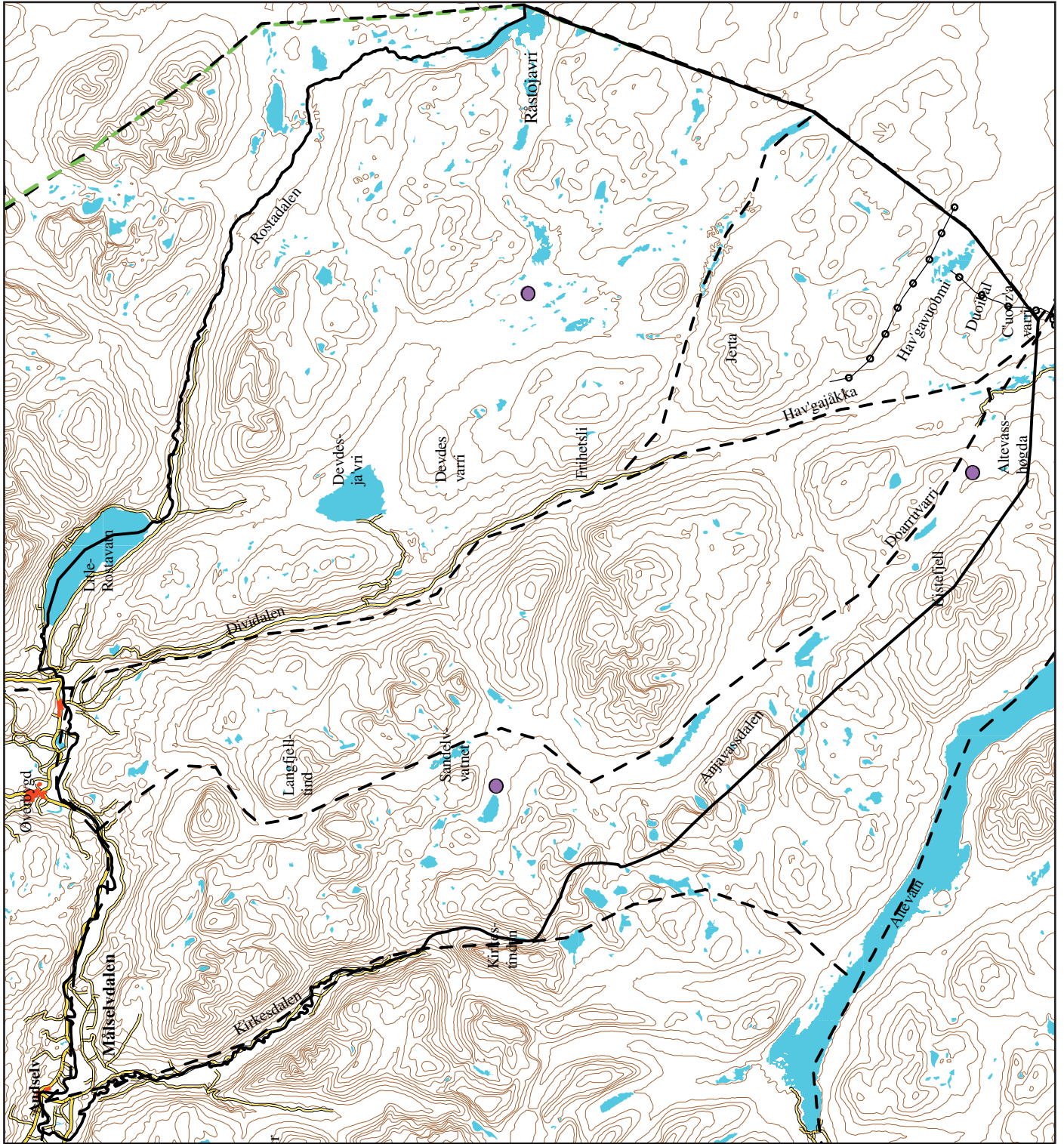
0 4 8 12 16 20 kilometer



Rosta reinbeitedistrikt
M 1 : 250 000



2.5

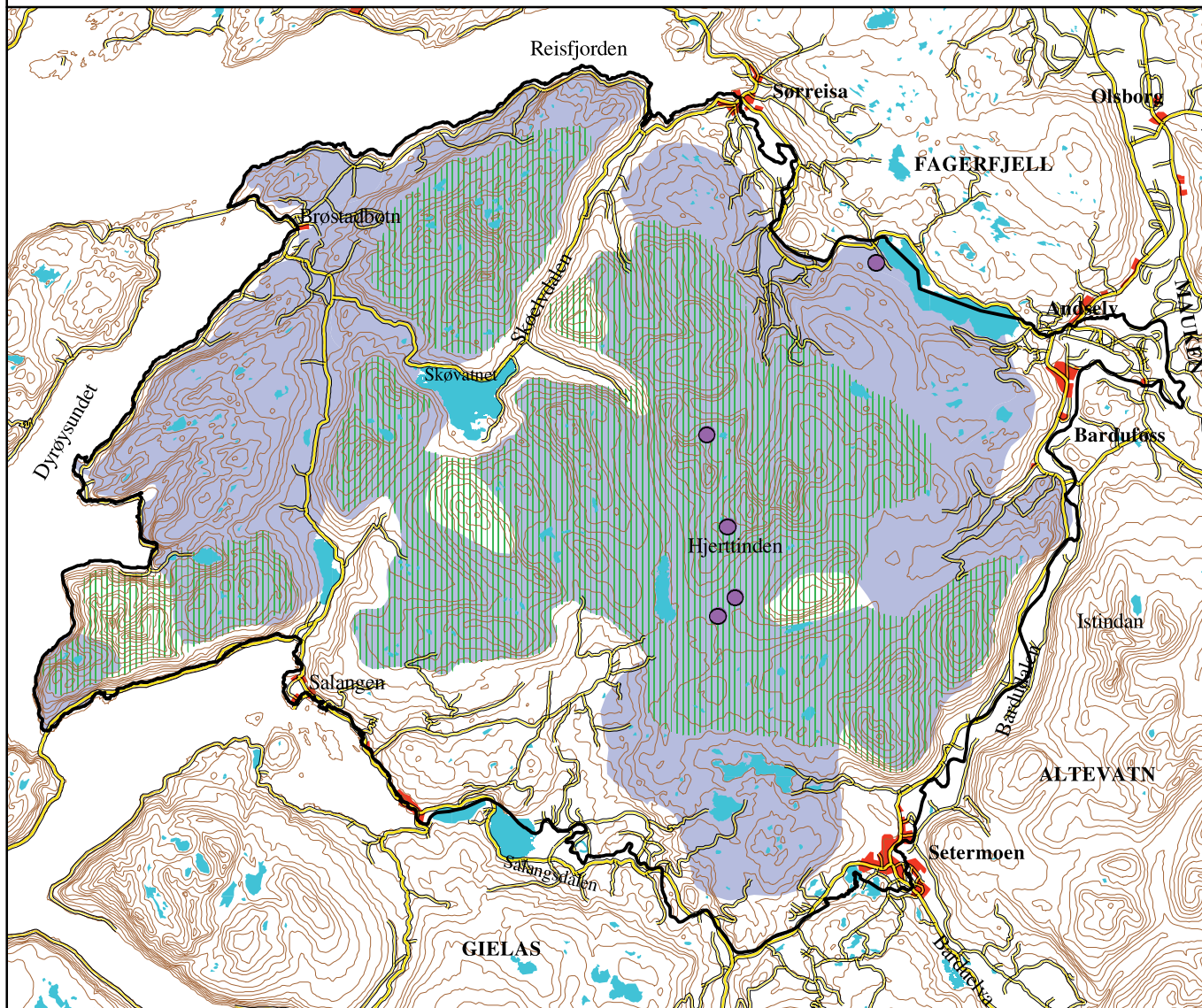


Dividalen reinbeitedistrikt
M 1 : 300 000



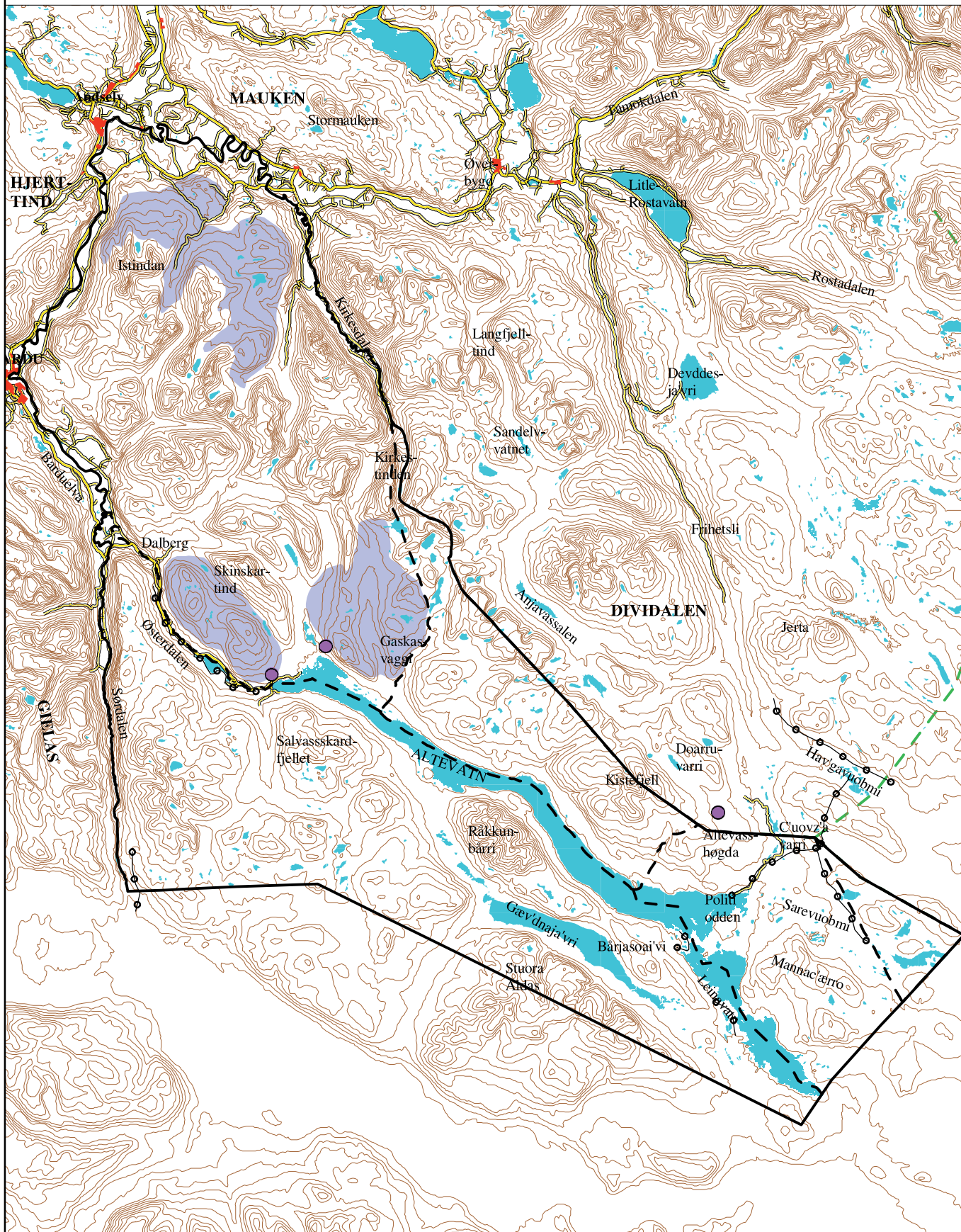
Hjerttind reinbeitedistrikt
Distriktets beskrivelse av sommerbeite
og beite med lav.
M 1 : 280 000

0 3 6 9 12 15 kilometer

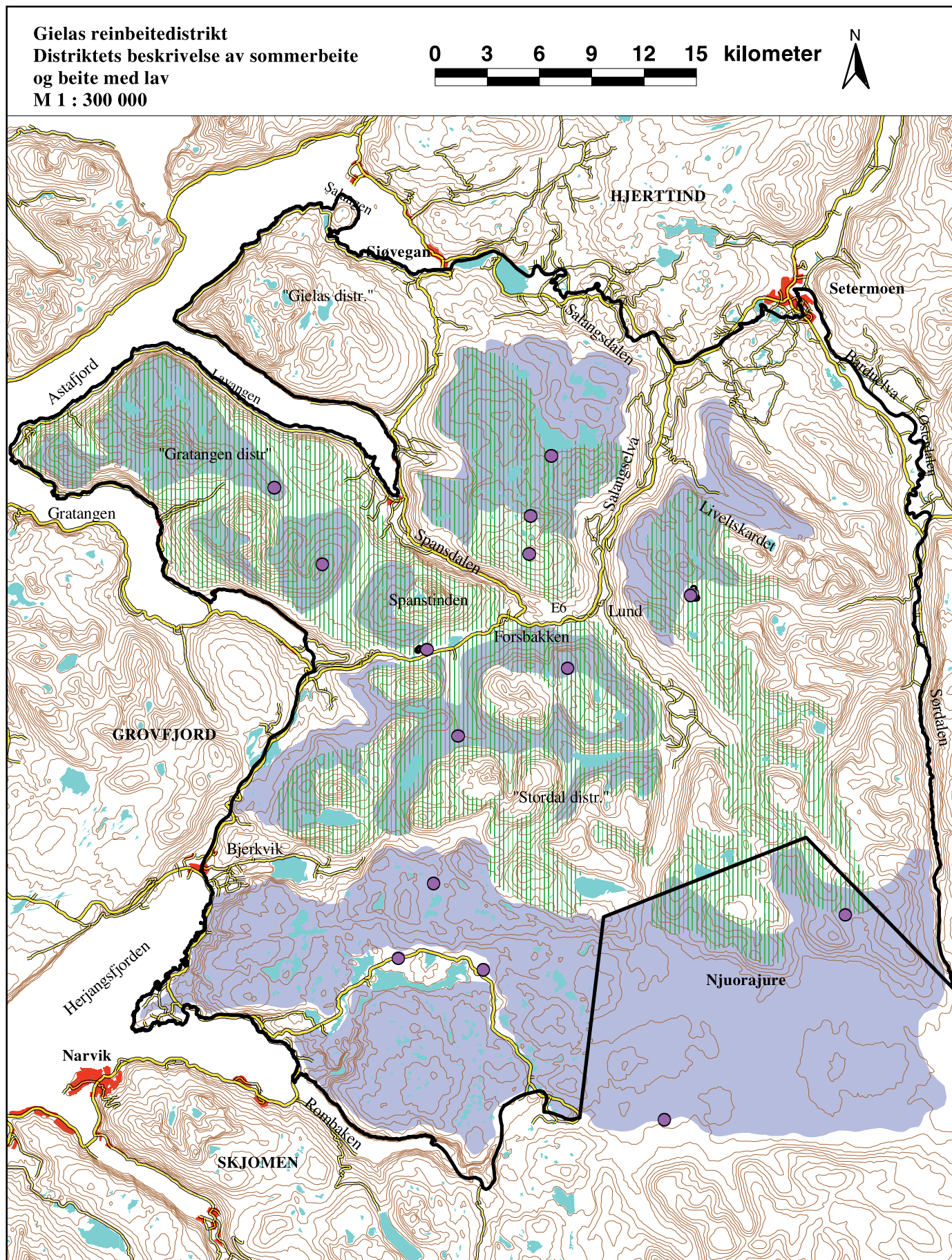


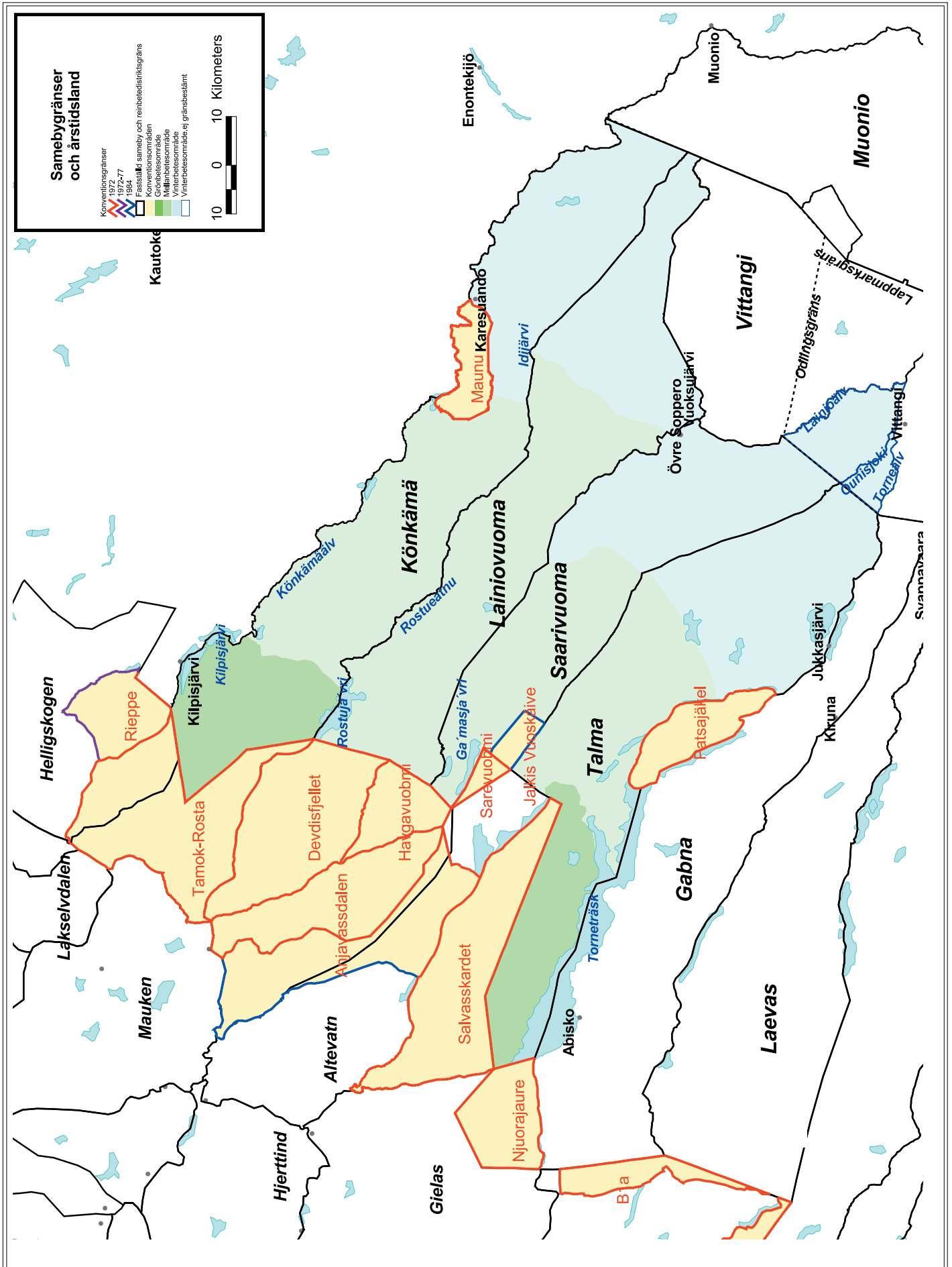
Altevatn reinbeitedistrikt
Norsk beskrivelse av tilgjengelig
vinterbeite områder.
M 1 : 400 000

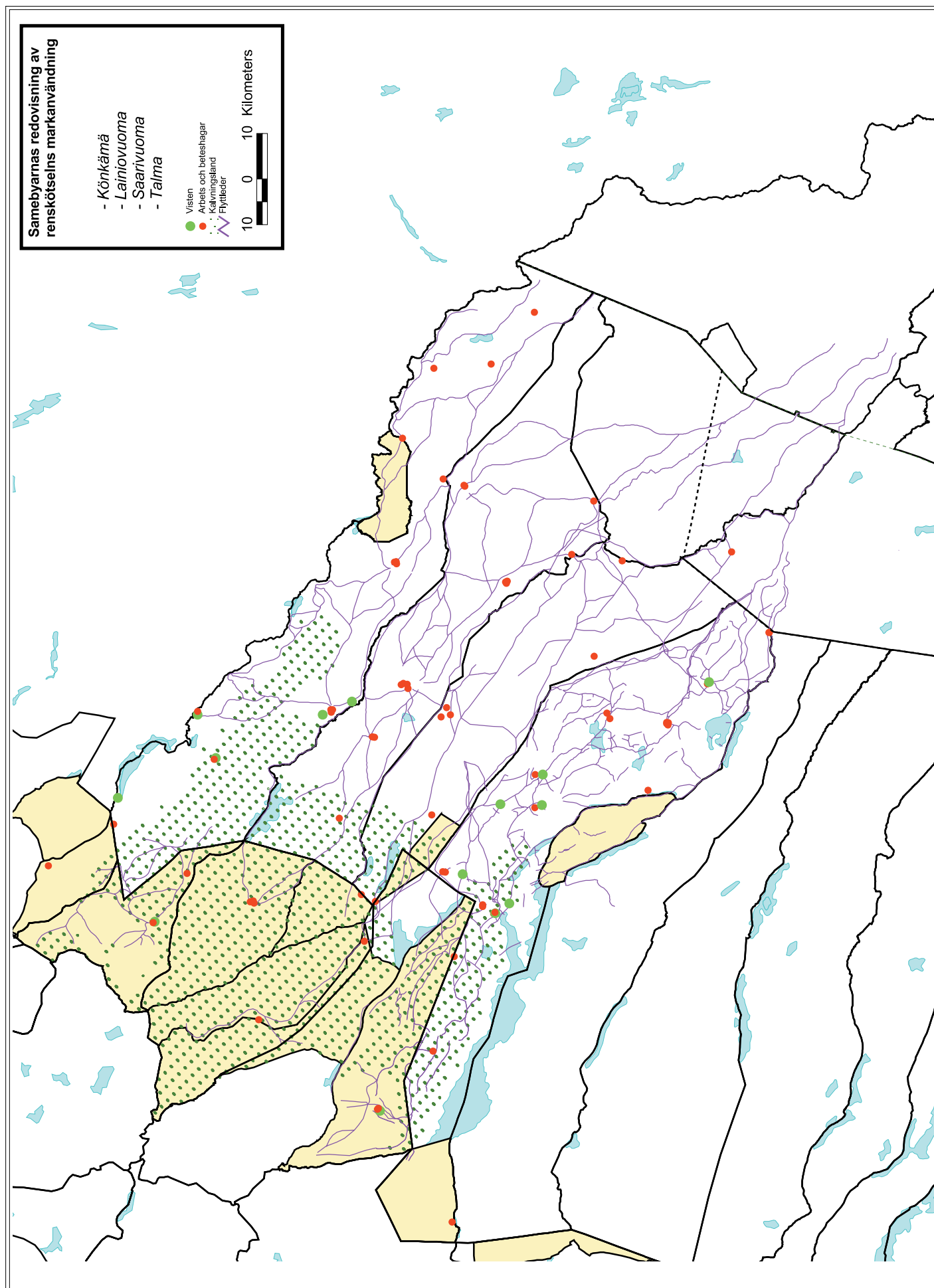
0 3 6 9 12 15 kilometer

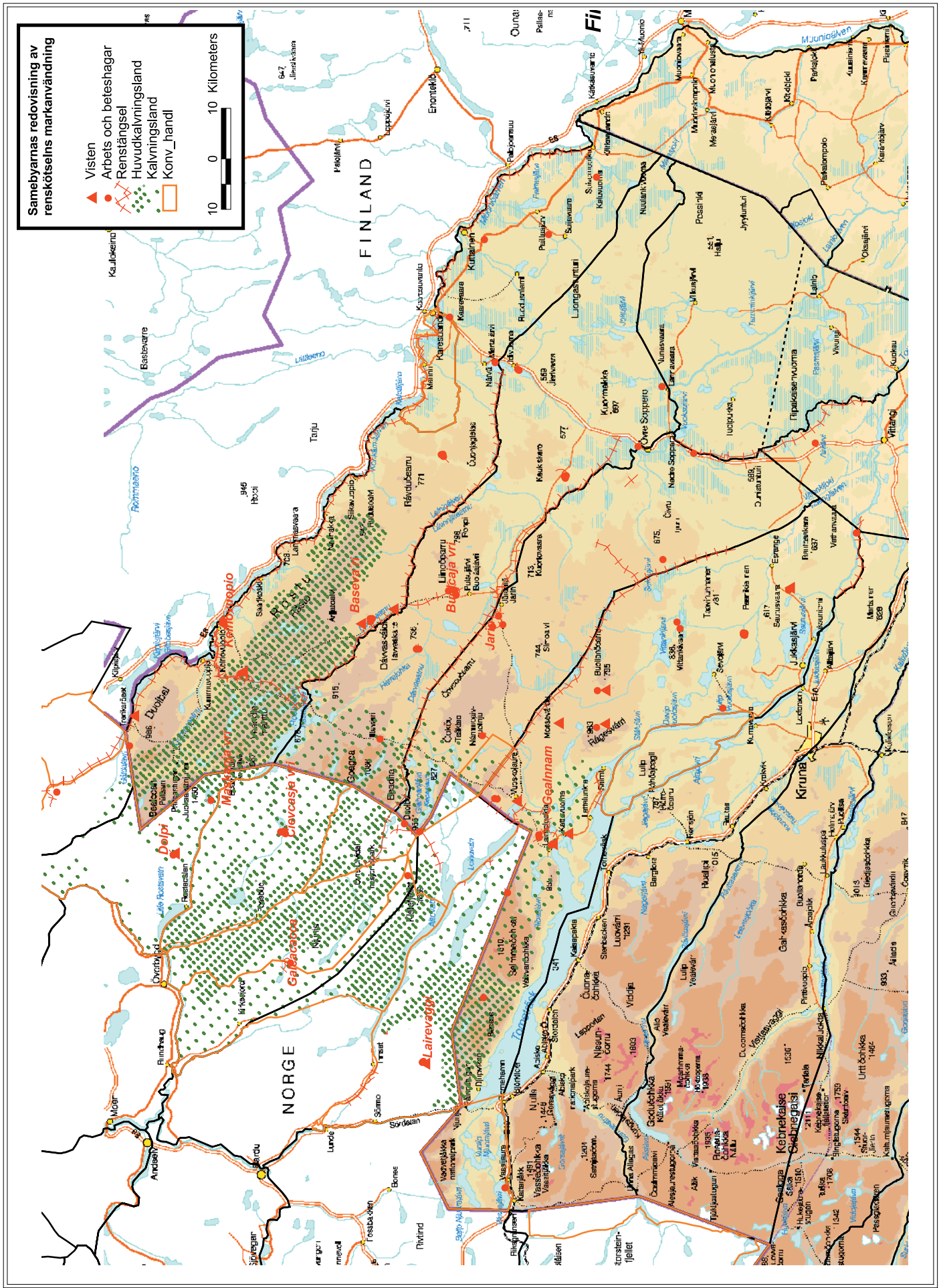


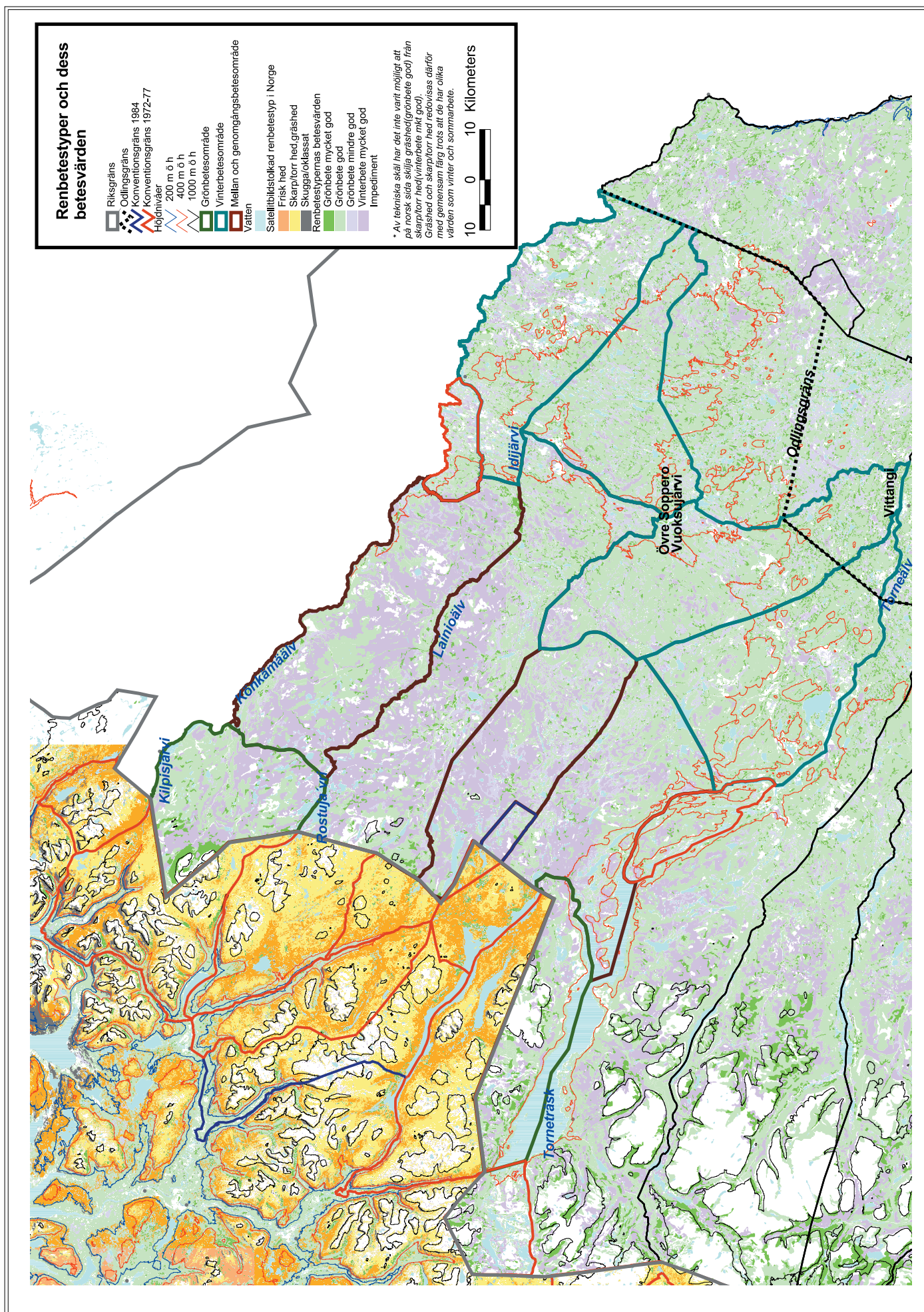
2.7

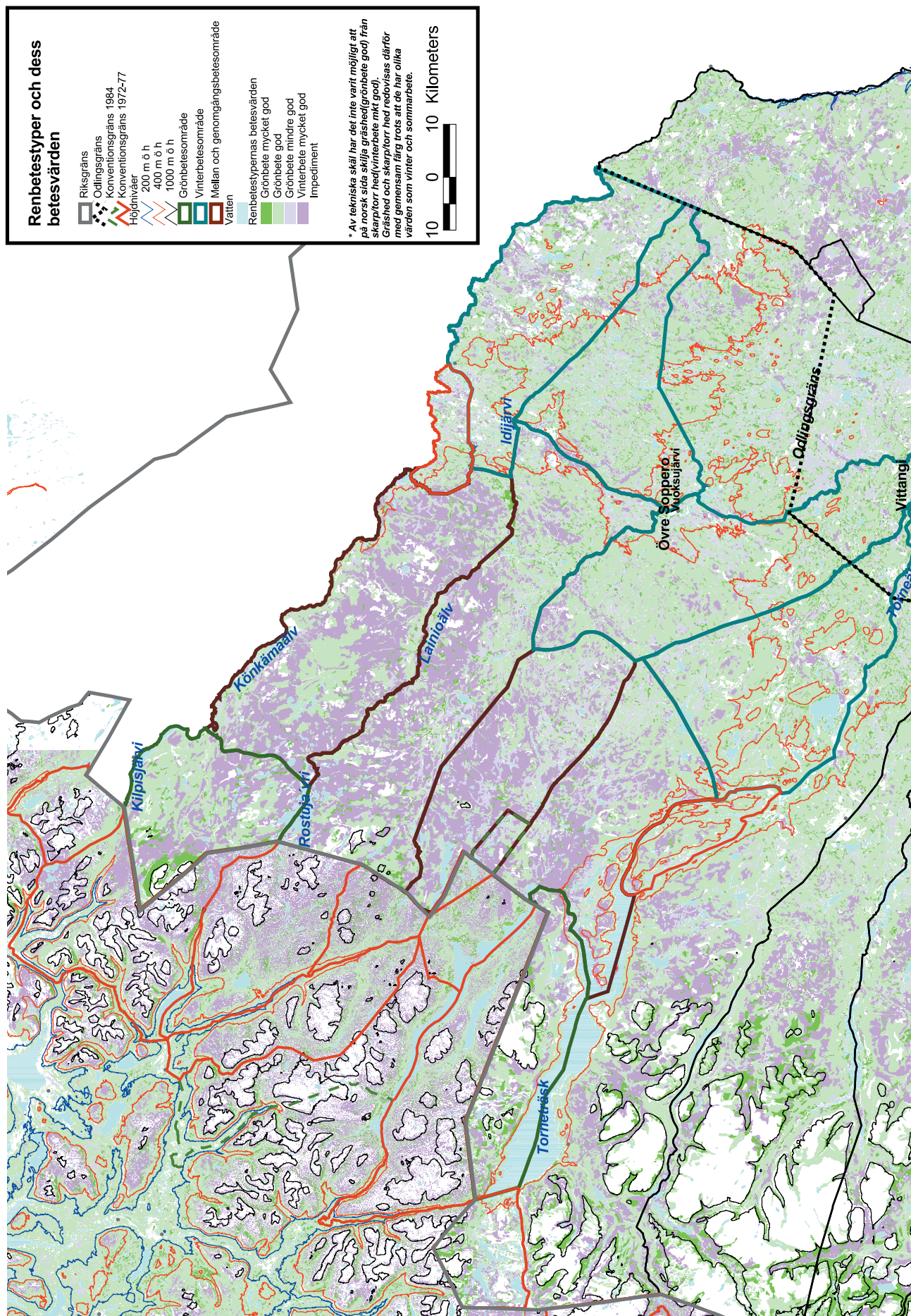




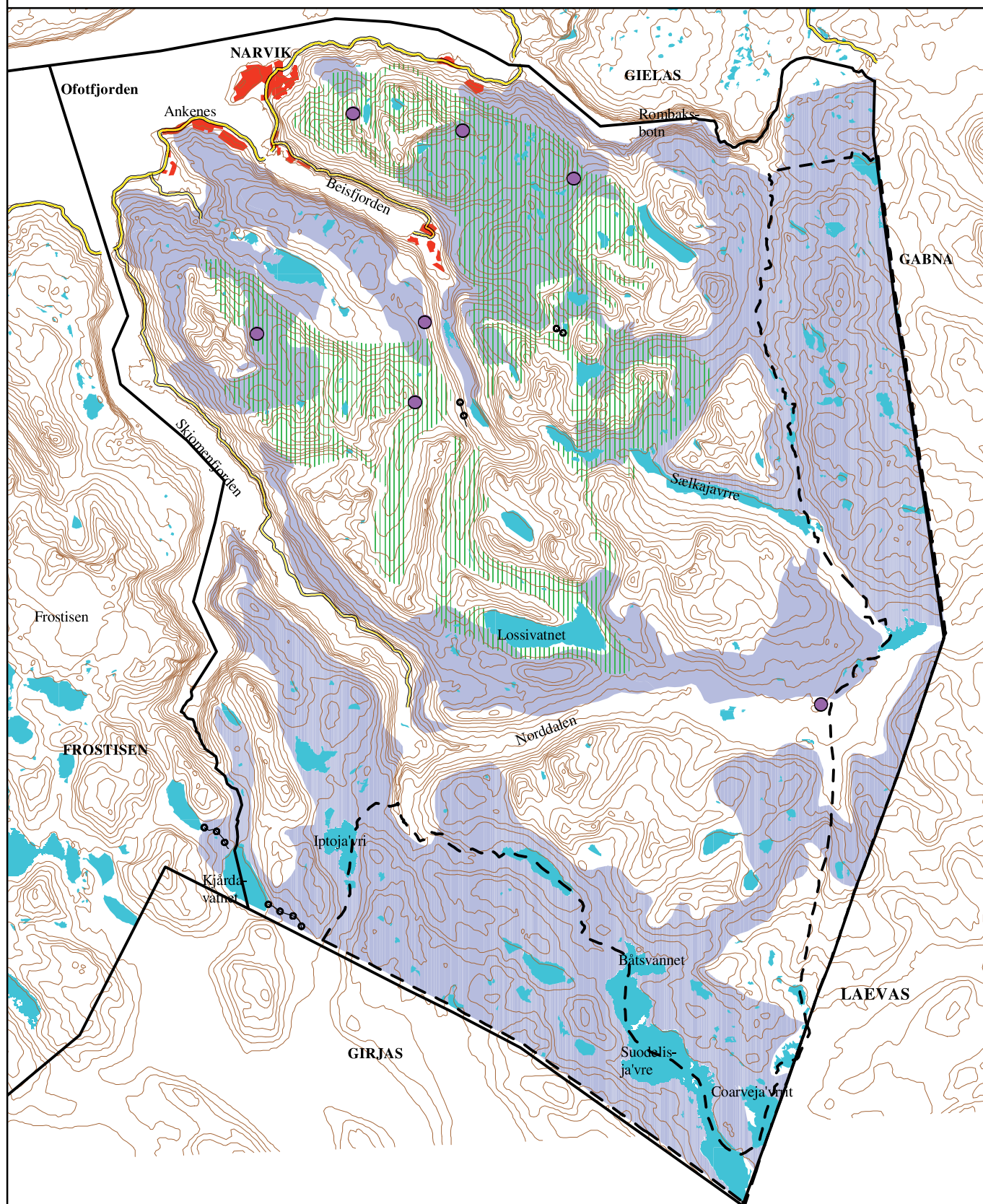
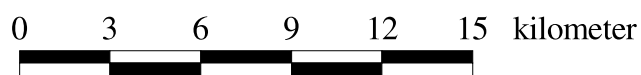








Skjomen reinbeitedistrikt
Distriktets beskrivelse av sommerbeite
og beiter med lav
M 1 : 250 000



Fagutvalgets forslag Skjomen
M 1 : 250 000

