



International Centre for Reindeer Husbandry
Международный Центр Оленеводства
Riikkaidgaskasaš Boazodoalloguovddáš

ANNUAL REPORT 2017



Front page picture: Traditional tent. Kasper Fogh/ ICR.

Part 1 - The ICR Board's Report for 2017

Based on the contents in this annual report, the Centre has done a very comprehensive work in 2017. The experience and work of the Centre shows that *the need for such a Centre is much greater than originally thought*. The activity of the Centre and the reception it has got in different forums and arenas shows that the establishment of such a Centre was appropriate, and that it fulfills important functions in circumpolar reindeer husbandry and in the work with specialists and authorities, functions that were not taken care of before. The Centre's work has been much in demand and many actors have apparently missed such a point of contact to the indigenous peoples engaged in reindeer husbandry throughout the circumpolar north. The Centre coordinates the work of different groups in reindeer husbandry and gains access for indigenous peoples and reindeer husbandry where it has not had access before. The activities and processes in and around the Centre are thus seen in light of the professional needs of the target groups.

Concerning the Centre's priorities in 2017, the Board put special emphasis on the following initiatives (in no particular order): The SDWG EALLU Project/ Arctic Indigenous Peoples Culinary Institute, the RCN Rievdan Project, UArctic EALÁT Institute at ICR, ReindeerPortal.org, UNEP/GEF Nomadic Herders/ Nomadic Herders Sápmi, Support of WRH, and work in the Arctic Council.

Many factors have influenced the goal achievements for the Centre in 2017. The Centre's wide-reaching institutional networks, the competence of ICR staff, the close coordination and collaboration with WRH and its member organisations, and a flexible and proactive basic organisation, have all in our view been key elements in securing goal achievement for the centre in this period. As far as external factors goes, the current challenging international situation has not negatively affected ICR's operations directly, though restricting funding access for projects to some degree.

Summing up, the Centre has gone forward on all major points in the Strategic Plan for 2017. All tasks that were prioritized have had very good progress, and new initiatives with strategic potential have been identified and actively pursued. Virtually all the measures have been carried through or initiated as assumed, within available resources and conditions. Taken into account the given possibilities of the Centre, both externally and in terms of internal resources and capacity, the Board concludes that the Centre has achieved very much in this period.



February 23, 2018

Inger Anita Smuk
Chair of the Board

Mikhail Pogodaev
Vice Chair of the Board

Per Jonas Partapuoli
Board Member

Mai-Britt Utsi
Board Member

Roza Laptander
Board Member

Part II - Introduction and Key Figures

2.1 The Aims, Work and Organization of the Centre

The purpose of the International Centre for Reindeer Husbandry (ICR) is to strengthen the international cooperation of reindeer husbandry¹. The main aim of the Centre² is to contribute to the maintenance and development of a sustainable reindeer husbandry in the North and to contribute to a strengthening of the cooperation between the world's reindeer herding peoples. The Centre shall also contribute to taking care of the traditional knowledge of reindeer husbandry, and to spread knowledge and understanding of reindeer husbandry.

ICR shall gather information and get an overview of relevant knowledge about reindeer husbandry and pass on information and documentation about conditions important for reindeer herders, for their culture and ecology, also including research results and reindeer herders' traditional knowledge. The Centre can indicate the need for and initiate research in collaboration with others. The Centre shall also provide professional and administrative support to the Association of World Reindeer Herders and its international activities. The Centre shall be operated in deliberation with WRH³.

ICR shall be a Centre of knowledge for preparing and exchanging information and documentation between the different groups of reindeer herders, scientists and administrators in the Arctic countries and to promote cooperation between them. The Centre shall thus promote further knowledge production, enhanced information and understanding for reindeer husbandry and the people living off reindeer husbandry worldwide. The international target groups⁴ for the work of the Centre are reindeer herders, public authorities, research and professional environments, other Arctic businesses⁵, organizations, collaborative bodies, and mainstream societies in reindeer herding countries.

ICR is an independent institution with its own Board and budget, and is formally organized as a state administrative body with a special authority. When it comes to administrative and financial questions, the Centre reports to the Ministry of Local Government and Modernisation (following the Section on Sámi and Minority Issues). The Statutes of the Centre has been revised in 2010, and were approved by the Ministry on July 1, 2010. The basic work of the Centre in 2017 has been funded by the Norwegian Ministry of Local Government and Modernisation.



¹ Letters of Award from the Ministry of Labour and Social Inclusion/ Ministry of Reform, Government Administration and Church Affairs/ Ministry of Local Government and Modernisation for 2006-2017

² The Statutes of the Centre, July 1st 2010, § 1.

³ The Statutes of the Centre, July 1st 2010, § 2 and 4. Letters of Award from the Ministry of Labour and Social Inclusion/ Ministry of Reform, Government Administration and Church Affairs/ Ministry of Local Government and Modernisation for 2006-2017.

⁴ The Statutes of the Centre, July 1st 2010, § 2

⁵ Discussion in the Norwegian Parliament on White Paper number 30 (2005) / Report to the Foreign Affairs Committee number 264 (2005)

2.2 The Board

The Board is the superior body of the Centre. It has the overall responsibility for the work and activities of the Centre. It is responsible for professional quality, for use of financial and other resources, and for strategic priorities. The Board decides the strategies for the Centre.

In a letter of 10th of October 2014 the Norwegian Ministry of Local Government and Modernisation invited the organizations of reindeer herders in the Russian Federation, Sweden, Finland and Norway, University of Tromsø, University of Umeå, Herzen University, Russian Science Academy in Yakutsk, University of Lapland, University of the Arctic, WRH, Sámi University College and the Sámi Council to propose candidates for the Board. Based on the incoming suggestions, the Ministry, in deliberation with WRH, appointed the following members for the Board from the 10th of October 2014:

- Reindeer herder Mrs. Inger Anita Smuk, Vice-chair of WRH, *Chair*
- Reindeer herder Dr Mikhail Pogodaev, Chair of WRH, *Vice-chair*
- Reindeer herder Mr. Per Jonas Partapuoli, Sáminuorra and SSR, Sweden
- Reindeer herder Dr Roza Laptander, Yamal, Reindeer Herders' Union of Russia
- Prof. Dr Mauri Ylä-Kotola, Rector of University of Lapland, Finland
- Mrs. Mai-Britt Utsi, Associated Professor, Sámi University of Applied Sciences. Norway

The following were appointed as Deputies:

Rated deputies for members from Norway:

1. Mr. Lars Kullerud, President, University of the Arctic
2. Dr. Mikkel Nils Sara, Associated Professor, Sámi University of Applied Sciences.

Rated deputies for members from Sweden:

1. Ms. Helena Omma, SSR, Sáminuorra, Sweden
2. Mrs. Anne-Maria Magga, Suoma Boazosámit, Finland

Rated deputies for members from Finland:

1. Mrs. Anne-Maria Magga, Suoma Boazosámit, Finland
2. Ms. Helena Omma, SSR, Sáminuorra, Sweden

Rated deputies for members from Russia:

1. Dr. Prof. Lyudmila Gashilova, Institute Director, Herzen University, Saint Petersburg, Russia
2. Dr. Vyacheslav Shadrin, Associate Professor, Russian Science Academy, Yakutsk, Russia

All the major reindeer herding nations are represented on the Board.

The Chair of the Board was appointed by the Ministry of Local Government and Modernisation together with WRH. The Board elects its own Vice-Chair. Dr. Mikhail Pogodaev, Russia, was elected as Vice-Chair at the Board meeting 11th -12th of November 2014. The Board is appointed for four years.

The Board has had 3 meetings in 2017; February 24 and August 15 in Jokkmokk, Sweden, and November 27-28 by Teleconference. The Board has processed 25 case issues in 2017.

2.3 The Administration

The Centre has been staffed with the following persons in the current period:

- Mr. Anders Oskal, Kautokeino, has been employed full-time as Executive Director
- Mr. Mikkel Anders Kemi, Kautokeino, has been employed full-time as Head of Office/ Senior Advisor.
- Ms. Elna Sara, Kautokeino, has been employed full-time as Information Manager.
- Prof Dr Svein D. Mathiesen, Tromsø, has been employed full-time as Senior Science Advisor/ UEI Professor and Institute Lead of UArctic EALÁT Institute at ICR. Mathiesen has also had a 20% work leave to work as Professor II at UiT Arctic University of Norway in Tromsø.
- Mr. Johan Mathis Turi, Kautokeino has been employed at 30 % as Senior Strategic Advisor.
- Ms. Sara Ellen Vars, has been employed at 30% as cleaning deputy.
- Prof Dr Robert W Corell, Washington DC, USA constituting 10% Senior Science Advisor/ UEI Professor II.
- Mr. Philip R. Burgess, Toronto, Canada, Engagement from January until April, and in August 2017 on hourly basis Project Coordinator associated with the ReindeerPortal.org and more.
- Ms. Anna Degteva, Saint Petersburg, Russia, Project Coordinator/ Researcher , engaged until August 20, from which point she has had a permission to leave.
- Ms. Svetlana Avelova, Saint Petersburg, Russia, Project Coordinator, Engagement 100% the whole year.
- Ms. Alena Gerasimova, Saint Petersburg, Russia, Project Coordinator, Engagement 100% the whole year.

In addition, there has been various, short-time engagements based on hourly rates, related to miscellaneous projects and other initiatives. This includes limited engagements of indigenous youth connected to projects etc.

In all, the Centre has had employees constituting roughly 8,3 man labour-years, with 21 different people engaged at the Centre through the period. While this could be said to represent a relatively wide spread of resources personnel-wise, it is part of a conscious strategy of widening ICR's reach in terms of people and networks especially related to project activities.

In addition, there has been a range of people from WRH's voluntary networks associated and working with the Centre in the period, connected to their roles in projects, local activities, voluntary work etc. These people have not received any salary from ICR (and are thus not included in the man-labour year setup). The following persons are especially mentioned here:

- Mr Tsogtsaikhan Purev, as Project Leader for Mongolia for the GEF/ UNEP Nomadic Herders Project.
- Mr Anatoly Lebedev, Mr Dmitry Marfuslov, Mr Alexander Grigorievich, as coordinators/ advisors for Nomadic Herders in Southern Sakha Republic.
- Marit Ravdna Buljo, Ellen Inga Turi, Ravdna Biret Marja Eira Sara, Jon Mikkel Eira, Ms Nechei Serotetto, Ms Marta Okotetto, Kia Krarup Hansen, Andrey Dubovtsev and others, as professional contributors to the EALLU food book, WRH activities and other initiatives.

There has also been learning for the Centre in terms of the administrative functions, including reporting, financial management, documentation and other demands. New tasks have also been introduced in this regard. In the current period one has also worked with developing processes and routines for the work of the Centre. This work will continue next year.

There has been two semi-annual meetings with the Ministry of Local Government and Modernisation in the period, following the Letter of Award. The first meeting was held March 21 by Teleconference, and the second meeting October 23 in Oslo.

The accounts of the Centre are kept by the Norwegian Government Agency for Financial Management (DFØ-Direktoratet for Økonomistyring). The Centre is audited by the Office of the Auditor General in Norway. The Office of the Auditor General had a regular contact meeting with the Centre on October 23 in Oslo.

2.4 Key Figures from the Centre's Accounts in 2017

Below is a table of key figures from the Centre's accounts in 2017, in NOK.

Key figures from the Centre's Accounts	2016	2017
Man labour-years	9,20	8,30
Total allocation post 01 - 99	10 202 000	10 275 000
Degree of utilization post 01 - 99	98,90	99,90
Operating expenses	10 326 548	10 287 032
Wage share of operating expenses	42,70	42,90
Wage share per man (incl pension cost from 2017)	478 952	532 175

Part III - Activities and Results over the Year

3.1 Introduction: The Challenges of Circumpolar Reindeer Herding

The Jåhkâmáhkke-Declaration from the 6th World Reindeer Herders' Congress in 2017 provides an updated description of the possibilities, the challenges and the problems of reindeer husbandry from reindeer herders' own perspectives. The declaration is concerned with diverse challenges such as reindeer herders' economy, biodiversity and protected areas, fragmentation of grazing lands, health and well-being, the challenges of taiga reindeer herding, education, research and management, as well as international collaboration. The Honningsvåg-Declaration from the Sámi Conference in 2005 emphasizes that the indigenous peoples themselves shall manage their own knowledge. The conducted reindeer husbandry projects under the umbrella of the Arctic Council also draw up challenges for reindeer husbandry (eg. Sustainable Reindeer Husbandry I and II, EALÁT and EALLIN, ARA, AACA, as well as the ongoing projects EALLU and Nomadic Herders).

Other documents and reports of importance to circumpolar reindeer husbandry, are the UN Declaration of Indigenous Peoples, the UN Convention on Biological Diversity, the UN declaration on Agenda 21, part 26, the Sustainable Development Goals, the ILO Convention 169 on the rights of indigenous peoples, the UNESCO Convention on the preservation and development of cultural diversity, the IPCC assessments, the Arctic Council Adaptation Action to a Changing Arctic assessments, and the human rights criteria for the global resource sector (GRS) in accordance with the FTSE 4Good and Dow Jones Sustainability Indexes.

The beginning of the 21st century marks a time of changes in the Arctic, changes in geographical areas and in societies. Climate change and changes in the use of the Arctic are important drivers for this development. These questions are being highlighted in the Arctic Council reports Arctic Climate Impact Assessment (ACIA) of 2004, the Arctic Human Development Report (AHDR) of 2004 and the Adaptation Action to a Changing Arctic assessments (AACA), the GLOBIO project within the framework of the UN Environmental Program (2001), and reports from the UN International Panel on Climate Change (IPCC). The Centre was established as a response to these challenges, cf. the Norwegian Parliamentary Report number 30 (2005) "Possibilities and challenges in the North" and the Report of the Standing Committee on Foreign Affairs of the Norwegian Parliament number 264 (2005).

The mechanisms and the network established by the Centre should be used towards practical reindeer husbandry. Through the work of the Centre, reindeer husbandry has been represented in arenas where it was not represented before. This is done in order to spread knowledge on circumpolar reindeer husbandry, its possibilities and its challenges. One has also focused on international networks in order to strengthen the role and possibilities of young reindeer owners. The Centre has deliberately worked to recruit youth to this line of work.

3.2 Projects

The project work and external funding has shown a generally increasing trend since the startup of the Centre. See also part 4 (further work). In 2017 the range of projects the Centre has initiated/ worked with includes the following initiatives, some of which will be specifically mentioned later (in no particular order):

- Arctic Council SDWG EALLU – Indigenous Youth, Climate Change and Food Culture 2015-2019
- Arctic Council AMAP Adaptation Actions to a Changing Arctic (AACAA), Barents Report
- UNEP/ GEF/ CAFF Nomadic Herders
- Nomadic Herders Sápmi (Development of courses (BD, TK & CBD art 8J) and land use change scenarios)
- UArctic EALÁT Institute at ICR
- Arctic Lavvu Dialogues
- Arctic Resilience Assessment
- BIRGEN – Traditional Knowledge and Education in Reindeer Husbandry (Reindeer herding traditional annual cycle calendar; Photo exhibit)
- Arctic Indigenous Peoples' Culinary Institute
- EU Horizon2020 INTERACT II Project (Lead WP9)
- EU Horizon2020 APPLICATE Project

3.3 Cooperation agreements

In 2017 the Centre has made professional cooperation agreements with the following institutions:

- EU Horizon 2020 INTERACT II project agreements.
- Agreement between ICR and WRH on organizing WRH's International Secretariat.
- Contributing to the creation of a Letter of Intent between Guovdageainnu Municipality, Norway and Tsaganuur Municipality, Mongolia on developing relations.

3.4 Publications

In 2017 the Centre has authored, published and/ or substantially contributed to the following publications, also in partnership with UEI and its institutional partners:

- Nechei M. Serotetto (2016): **Intercomparison of reindeer herding vocabulary in northern Sami and Nenets languages.** In *Lyublinskaya MD and VS Ivanova eds (2016): Deer in the culture of the peoples of the North: a collection of materials of the scientific and practical seminar "Reindeer-breeding vocabulary in the Uralic languages"* (St. Petersburg, INS, April 20, 2016), p. 58-72. Russian State Pedagogical University – AI Herzen, Institute of the Peoples of the North, St. Petersburg, Russia. Herzen University Press, 2016. - 110 p. ISBN 978-5-8064-2322-2. Сэротэтто Н. А. **Сопоставление оленеводческой лексики северного саамского и ненецкого языков** // Под ред. М. Д. Люблинской, В. С. Ивановой: Олень в культуре народов севера: Сборник материалов научно-практического семинара «Оленеводческая лексика в уральских языках» (Санкт-Петербург, ИНС, 20 апреля 2016 г.) / Под ред. М. Д. Люблинской, В. С. Ивановой. — СПб.: Изд-во РГПУ им. А. И. Герцена, 2016. с.58-72.

- Wilbert van Rooij, Philip Burgess, Per Arild Garnåsjordet, Svein D. Mathiesen and Iulie Aslaksen (2017): **Ecological change in Arctic regions – a GLOBIO3 pilot study of impacts on biodiversity**. In *The Economy of the North*, Solveig Glomsrød, Gérard Duhaime and Iulie Aslaksen (eds.) page 147- 162. Arctic Council Sustainable Development Working Group Report. Statistisk Sentralbyrå, 2017. ISSN 0804-3221.
- Davin Holen, Drew Gerkey, Even Høydahl, David Natcher, Martin Reinhardt Nielsen, Birger Poppel, Paul Inge Severeide, Hunter T. Snyder, Mary Stapleton, Ellen Inga Turi and Iulie Aslaksen (2017): **Interdependency of subsistence and market economies in the Arctic**. In *The Economy of the North*, Solveig Glomsrød, Gérard Duhaime and Iulie Aslaksen (eds.) page 89-125, Arctic Council Sustainable Development Working Group Report. Statistisk Sentralbyrå, 2017. ISSN 0804-3221.
- Minna Turunen, Anna Degteva, Seija Tuulentie, Anatoli Bourmistrov, Robert Corell, Edward Dunlea, Grete Hovelsrud, Timo Jouttijärvi, Sari Kauppi, Nancy Maynard, Bob van Oort, Arja Rautio, Hein Rune Skjoldal, Natalia Anisimova, Valery Chashchin, Dmitrii Denisov, Anastasia Emelyanova, Elena Eriksen, Jaakko Erkinaro, Jon L Fuglestad, Geir Wing Gabrielsen, Ludmila Maria Granberg, Leena Grandell, Andrei Gudkov, Ingeborg G Hallanger, Antti Hannukkala, Petri Heinimaa, Boris Ivanov, Edda Johannesen, Lis Jorgensen, Timo Jouttijärvi, Panu Juntunen, Sari Kauppi, Carina Keskitalo, Asta Kietäväinen, Juha Kiviluoma, Oleg Korneev, Kari Lehtonen, Lars Lindholt, Pavel Lyubin, Frode Nilssen, Teuvo Niva, Jon Oyvind Odland, Julia Olsen, Willy Østreng, Riku Pasonen, Stanislav 2017. **Impact analysis and consequences of change**. In *AMAP (2017) Adaptation Actions for a Changing Arctic: Perspectives from the Barents Area*. Arctic Monitoring and Assessment Program (AMAP), Oslo, Norway. Pages 127-166. Barents scientific report. ISBN-13 978-82-7971-102-5.
- Anna Degteva, Anders Oskal, Svein D. Mathiesen, Philip Burgess Iulie Aslaksen, Kathrine Johnsen, Anne-Maria Magga, Wilbert van Rooi Camilla Brattland, Robert Corell, Andrey Dubovtsev, Per Arild Garnåsjordet, Aslak Holmberg, Konstantin Klokov, Nancy G. Maynard, Christian Nellemann, Beaska Niillas, Per Jonas Partapuoli, Mikhail Pogodaev, Erik Reinert, Per Sandström, Igor Slepushkin, Inger A Smuk, Jannie Steffanson, Zinaida Strogalschikova, Alexey Tsykarev, Levi Westerveld (2017): **Indigenous peoples' perspectives**. In *Arctic Council report Adaptation Action in Changing Arctic* page 167-194, Arctic Council AMAP, Oslo, Norway. «AMAP, 2017. Adaptation Actions for a Changing Arctic: Perspectives from the Barents Area. Arctic Monitoring and Assessment Program (AMAP), Oslo, Norway. xiv + 267pp. ISBN-13 978-82-7971-102-5.
- Miriam Huitric, Garry Peterson and Juan Carlos Rocha, Marcus Carson, Douglas Clark, Bruce Forbes, Grete K. Hovelsrud, Svein D. Mathiesen, Ashley Perl, Allyson Quinlan Hanna Ahlström, Rawaf Al Rawaf, Derek Armitage, Dag Avango, Svetlana Avelova, Heather Bell, Adrian Braun, Clara Burgard, Christopher Cosgrove, Daniele Crimella, Enoil de Sousa Júnior, Anna Degteva, Lara Dominguez, Niels Einarsson, Viktoriia Filippova, Melanie Flynn, Jonas Gren, Hannah Griffiths, Gustav Grusell, Elin Högström, Elinor Holén, Henry Huntington, Hanna Kylin, Matilda Lenell, Katrin Lindbäck, Linda

Lindström, Cornelia Ludwig, Tobias Luthe, Katja Malmborg, Svein D. Mathiesen, Viveca Mellegård, Yasir Muhammad, Tero Mustonen, George Noongwook, Julia Olsen, Roweena Patel, Aliaksei Patonia, Shealagh Pope, Kaitlyn Rathwell, Fernando Remolina, Stine Rybråten, Carmen Seco Pérez, Nikolas Selheim, Philip Siegel, Jessica Spijkers, Dries Stevens, Andrea Utas, Lize-Marie van der Walkt, Liliia Vinokurova, Kate Williman, Alexander Winkler (2016): **What factors build or erode resilience in the Arctic?** In Carson M and Peterson G et al. (2016) *Arctic Council Arctic Resilience Report*, Chapter 4, pp 96-125. Stockholm Environment Institute and Stockholm Resilience Centre, Stockholm, Sweden. (www.arctic-council.org/arr). ISBN 9789186125455.

- Kathrine Ivsett Johnsen, Svein Disch Mathiesen, and Inger Marie Gaup Eira (2017): **Sámi reindeer governance in Norway as competing knowledge-systems: A participatory study.** Ecology and Society, Stockholm (Accepted for publication).
- Mathiesen, SD, Mathis P. Bongo, P. Burgess, Robert W. Corell , Anna Degteva, Inger Marie G. Eira, Inger Hanssen-Bauer, Alvaro Ivanoff , Ole Henrik Magga, Nancy G. Maynard, Anders Oskal, Mikhail Pogodaev, Mikkel N. Sara, Dagrun Vikhamar Schuler, and Ellen Inga Turi (forthcoming 2017): **Indigenous Reindeer Herding and Adaptation to New Hazards in the Arctic**, In Nakashima et al (forthcoming 2017): *Indigenous Knowledge and Climate Change - Foundations for assessment and adaptation*. Cambridge University Press, Cambridge, UK (Accepted for publication).
- Philip Burgess, Elena Antipina, Svetlana Avelova, Anna Degteva, Andrey Dubovtsev, Binderiya Dondov, Alena Gerasimova, Svein D Mathiesen, Anders Oskal, Mikhail Pogodaev Eilene Adams, Roksana Avevkhay, Burmaa Batkhishih, Khoschimeg Bayandalai, Olesya Bolotaeva, Karrie Brown, Máret Rávdna Buljo, Anna Chuprina, Sonita Cleveland, Rávdna Biret Márjá Eira Sara, Sarantuya Ganbat, Bayarmagnai Ganbold, Inger Marie Gaup Eira, Nadezhda Gerasimova, Tsetsegmaa Gombo, Chantal Gruben, Maxim Gulyaev, Jacey Firth-Hagen, Kia Krarup Hansen, Cyrus «Naungaq» Harris, Vlada Kaurgina, Zhanna Kaurgina, Mikkel Anders Kemi, Aleksandr Krasavin, Irina Krivoshapkina, Elvira Okotetto, Marta Okotetto, Nikolay Osenin, Maria Pogodaeva, Alena Prokopjeva, Udval Purevjav, Elna Sara, Nechei Serotetto, Lyubov Sidorova, Inger Anita Smuk, Anatoly Sorokin, Marjorie Tahbone, Sandy Tahbone, Valentina Tokhtosova, Issát Turi, Suanne Unger, Maria Yaglovskaya, Olesya Yakovleva, Sofia Zakharova, Uudus Zolzaya, Zagalmaa Zorigt (2017): **Indigenous youth, Arctic Change and Food Culture - Knowledge and How We Have Thrived on the Margins.** Arctic Council Sustainable Development Working Group Report 2015–2017, pp: 160. ISBN 978-82-998051-1-7.
- This book itself consists of the following range of articles:
 - Anders Oskal, Mikhail Pogodaev, Svein D Mathiesen, Alena Gerasimova and Svetlana Avelova (2017): **SDWG EALLU 2017 Executive Summary and Recommendations for the Arctic Council.** In *Indigenous youth, Arctic Change and Food Culture - Knowledge and How We Have Thrived on the Margins*, Arctic Council Sustainable Development Working Group Report, 2017

- Elvira Okotetto, Marta Okotetto and Nechei Serotetto (2017): **Nenets: Raw Meat Eaters**. In *Indigenous youth, Arctic Change and Food Culture - Knowledge and How We Have Thrived on the Margins*, Arctic Council Sustainable Development Working Group Report, 2017
- Issat Turi, Maret Ravdna Buljo, Jon Mikkel Eira, Inger Anita Smuk (2017): **Sámi: Smoked and Cooked**. In *Indigenous youth, Arctic Change and Food Culture - Knowledge and How We Have Thrived on the Margins*, Arctic Council Sustainable Development Working Group Report, 2017
- Irina Krivoshapkina, Maria Yaglovskaya, Zhanna Kaurgina, Vlada Kaurgina, and Olesya Yakovleva (2017): **Chukchi: Reindeer blood, the first four ribs and wild plants**. In *Indigenous youth, Arctic Change and Food Culture - Knowledge and How We Have Thrived on the Margins*, Arctic Council Sustainable Development Working Group Report, 2017.
- Olesya Bolotaeva, Anatoly Sorokin and Roksana Avevkhay (2017): **Koryak: Festive food and knowledge in Kamchatka and Magadan**. In *Indigenous youth, Arctic Change and Food Culture - Knowledge and How We Have Thrived on the Margins*, Arctic Council Sustainable Development Working Group Report, 2017
- Anna Chuprina and Sophia Zakharova (2017): **Dolgan: Reindeer eyes and fish**. In *Indigenous youth, Arctic Change and Food Culture - Knowledge and How We Have Thrived on the Margins*, Arctic Council Sustainable Development Working Group Report, 2017
- Alena Gerasimova, Nadezhda Gerasimova, Lyubov Sidorova and Svetlana Avelova (2017): **Evenki: Kapka and blood sausage**. In *Indigenous youth, Arctic Change and Food Culture - Knowledge and How We Have Thrived on the Margins*, Arctic Council Sustainable Development Working Group Report, 2017
- Maria Pogodaeva, Nikolay Osenin, Mikhail Pogodaev, Maxim Gulyav and Alena Prokopieva (2017): **Even: Stomach soup and reindeer yoghurt**. In *Indigenous youth, Arctic Change and Food Culture - Knowledge and How We Have Thrived on the Margins*, Arctic Council Sustainable Development Working Group Report, 2017
- Valentina Tokhtosova (2017): **Yukagir: Yukola and chumuododje**. In *Indigenous youth, Arctic Change and Food Culture - Knowledge and How We Have Thrived on the Margins*, Arctic Council Sustainable Development Working Group Report, 2017
- Burmaa Batkhisih, Khoschimeg Bayandalai, Sarantuya Ganbat, Bayarmagnai Ganbold, Tsetsegmaa Gombo, Udval Purevjav, Uudus Zolzaya and Zagalmaa Zorigt (2017): **Dukha: Hunguun and the wild potato**. In *Indigenous youth, Arctic Change and Food Culture - Knowledge and How We Have Thrived on the Margins*, Arctic Council Sustainable Development Working Group Report, 2017
- Eilene Adams, Sonita Cleveland, Cyrus «Naungaq» Harris, Sandy Tahbone, Marjorie Tahbone, and ICC Alaska (2017): **Inuit Alaska: Tuttu, mipkuq, ugruk, tunuq, akutaq**. In *Indigenous youth, Arctic Change and Food Culture - Knowledge and How We Have Thrived on the Margins*, Arctic Council Sustainable Development Working Group Report, 2017
- Chantal Gruben (2017): **Inuit Canada: Caribou meat gravy**. In *Indigenous youth, Arctic Change and Food Culture - Knowledge and How We Have Thrived on the Margins*, Arctic Council Sustainable Development Working Group Report, 2017

- Suanne Unger (2017): **Aleut: Traditional unangan/ unangas (Aleut) food. Subsistence is sustenance for the life.** In *Indigenous youth, Arctic Change and Food Culture - Knowledge and How We Have Thrived on the Margins*, Arctic Council Sustainable Development Working Group Report, 2017
 - Jacey Firth-Hagen (2017): **Gwich'in: Caribou are half our heart.** In *Indigenous youth, Arctic Change and Food Culture - Knowledge and How We Have Thrived on the Margins*, Arctic Council Sustainable Development Working Group Report, 2017
 - Karrie Brown (2017): **Athabaskan: Moose blood and dry meat soups.** In *Indigenous youth, Arctic Change and Food Culture - Knowledge and How We Have Thrived on the Margins*, Arctic Council Sustainable Development Working Group Report, 2017
- Nadezhda Gerasimova (2017): **The Traditional Cuisine of the Evenki People of Southern Yakutia.** Printinghouse DealSib Company, Novosibirsk, Russia. pp. 154. ISBN: 978-82-998051-3-1
 - A total of 16 *Scientific Abstracts* accepted and delivered to IASSA ICASS IX Science Conference: People and Place. Umeå, Sweden, June 8-12, 2017. International Association of Social Scientists in the Arctic.
 - A total of 3 *Scientific Abstracts* accepted and delivered to Arctic Council AMAP Science Conference: International Conference on Arctic Science - Bringing Knowledge to Action. Reston, Virginia, US, 24-27 April, 2017. Arctic Council AMAP.

In addition, the following publications have been submitted in the period:

- Mathiesen SD, A Oskal and R.W. Corell (Eds): **Adaptation to a Changing Arctic: Taking Knowledge to Action.** Science book, University of Alberta Press. In manuscript.
- Eira, Inger Marie Gaup; Mathiesen, Svein Disch. **Guođohanbeaivegirji reaidun gozihit dálveguohtoneatnamiid guohtundiliid.** Submitted to *Sámi dieđalaš áigecála*, 2017-18.
- Hansen, Kia K, Monica A. Sundset, Lars P. Folkow, Marte Nilsen & Svein D. Mathiesen: **Enteric methane emissions from reindeer are lower on a lichens diet than on a pelleted feed diet.** Submitted to *Polar Research*, 2017.

3.5 Actions and Measures in the Strategic Plan of 2017

Here follows a comprehensive review of the Centre's Strategic Plan for the period. According to Board Decision 14/16 (ICR Strategic Plan 2017-), some activities in the plan were given priority over others. In the review below these priority activities are marked with a (*).

3.5.1 Traditional Knowledge in Reindeer Husbandry:

One of the Centre's main purposes is to take care of and document traditional knowledge from reindeer husbandry, in close cooperation with local reindeer herders, with the aim that this knowledge can be utilized in management of reindeer husbandry and the natural environment.

3.5.1.1 UArctic EALÁT Institute at ICR (UEI at ICR) – University of the Arctic EALÁT Institute for Circumpolar Reindeer Husbandry (*)

UEI at ICR has arranged/ co-arranged a variety of professional seminars and workshops in the period. There has also been arranged courses, cf. later chapters in this report.

Within UEI at ICR one has also been working with the IPY EALÁT Science Book, in collaboration with UArctic Press/ CCI in Canada, forthcoming for final publication. However, the work was delayed in 2017 due to the University of Alberta's earlier decision to close down UArctic Press/ CCI.

As a legacy of SDWG EALÁT, the SDWG EALLIN and SDWG EALLU projects in the Arctic Council has been major follow-up platforms of the EALÁT concept, continuing refinement of methods and tools as well as institutional networks, with a focus on reindeer herding youth and active youth participation. See separate chapter on SDWG EALLU.

3.5.1.2 Arctic Indigenous Peoples' Culinary Institute (*)

The indigenous reindeer herding communities in Fennoscandia, Russia, China, Mongolia and North America are presently facing new challenges and threats against a sustainable development and local value added. The reasoning behind the *Arctic Indigenous Peoples' Culinary Institute initiative (AIPCI)* is that ICR wish to develop methods and skills to improve the economy of reindeer husbandry to maintain its resilience and sustainability in face of rapid Arctic change, focusing on diversity and economic freedom of reindeer herders. ICR acknowledge that the traditional knowledge among the reindeer husbandry professionals is the foundation for a sustainable livelihood. At the same time, it is seen as important to ensure the reindeer herders' access to and ownership of the most profitable parts of their value chains.

In the period, ICR has implemented activities of AIPCI in coordination with SDWG EALLU and RCN Rievdan. See list of activities under the chapter for SDWG EALLU. These efforts were also linked to UArctic EALÁT Institute.

In the period, ICR has worked on refining the concept of the virtual culinary institute. This has included initial work to clarify R&D components, mapping partner institutions and people, networking and relation building, work with funding applications and more. This also includes work with the Biebmu network. Funding applications have been developed for various funding sources.

3.5.1.3 Arctic Council EALLU: Indigenous Youth, Climate Change and Food Culture *)

See information under 3.5.4.3.

The work with UArctic EALÁT Institute at ICR, the Arctic Council EALLU Project, and the Arctic Indigenous Peoples' Culinary Institute have all had good progress.

3.5.2 Establishing a Database for Circumpolar Reindeer Husbandry:

The Centre has a long-term goal to establish and maintain a database that includes all issues of significance for reindeer husbandry, as part of bringing forward necessary tools for management.

3.5.2.1 Collection of Baseline Data on Circumpolar Reindeer Husbandry

The Centre has focused on collection of data from different regions in partnership with WRH through existing projects and processes. Gathered materials have to some extent, been outreach through ReindeerPortal and other written materials. These efforts have also been supplemented by the Centre's work with the Arctic Council AACA, the Arctic Council EALLU project, and more. Through the Nomadic Herders project, the information on particularly the Taiga regions has been maintained, as well as biodiversity data for the Barents region.

The collection of baseline data for a database has had good progression, given available resources.

3.5.3 Outreach and Information, Knowledge Development, Development of New Outreach Tools:

The Centre is to contribute to sustainable reindeer husbandry through circumpolar knowledge promotion and development. It is a goal to establish the Centre's position as a key knowledge provider on circumpolar reindeer husbandry.

3.5.3.1 Development of the ReindeerPortal.org (*)

In the period the Centre has retained all the social media and information platforms which the Centre have been running since 2013. The ReindeerPortal.org is developed in a continued partnership with WRH, as well as other UArctic partners.

ReindeerPortal had 31 956 visits in 2017 by 24 102 users, 88% of whom were new. In all, 73 541 pages were loaded. Top countries were as follows: USA (34%) Norway (9%),

Sweden (8%), UK (7%), Russia (7%), Canada (6%), Finland (3.5%). The language of visitors is above 60 % English.

Most people find the site through *Google* search or are referred via Facebook. *Yandex*, the Russian search engine is now the 2nd most used search engine used to find our site, while top 3 search terms to find us are 'reindeer herders', 'reindeer herding' and 'reindeer'.

The Reindeer Portal is currently home to multiple sub-project sites including nomadicherders.org, eallin.org, davggas.org, rievdan.org, ealat.institute, eallu.org and 6wrhc.org. The Reindeer Portal is accessible through multiple URLs including reindeerportal.org, reindeerherding.org, reindeercentre.org and others, all to maximise accessibility and traffic.

Utilization of social media:

As an integral part of the focus on the ReindeerPortal.org, one has also worked on the inclusion and linkages towards new social media. The aim is to also utilize social media with the whole ReindeerPortal.org concept to secure mutually supportive outreach strategies and build-up of wanted traffic. Newly generated content is reflected automatically through selected social media channels. In order to enhance the reach and linkages to different user groups, ICR has maintained social media pages linked to the ReindeerPortal.org, and vice versa.

The Centre's social media platforms are increasingly a larger means by which we outreach our work and news related to reindeer husbandry world wide.

Facebook

The Centre has its own page on Facebook, which represents an increasingly popular means of outreaching ICR news and content, as well as that of other partners. This platform has a low technical barrier to entry, and a very wide reach. In the period, the number of followers grew from 1 710 to 2 056, breaking 2 000 followers for the first time. The gender of followers are 58% Female and 39% Male. The largest cohort is 25-34 years old (25%), and the next is 35-44 (23%). Follower countries are in order: Norway (609), USA (327), Sweden (283), Finland (137), Russia (113), and Canada, UK, Mongolia, and Germany.

Twitter

ICR also uses Twitter to outreach and bring attention to content from ICR and the ReindeerPortal.org. This platform has grown exponentially through 2017. At the end of 2015 we had 292 followers on Twitter. This grew last year to 604 followers, ie. a significant increase over previous years. Follower gender is 55 % female and 45 % male. Primary interest are in Science News. The country list in order of follower are as follows: USA, Norway, Canada, Finland, Sweden, UK, Russia, France, Germany, Denmark. The largest age category is 13-17 years (46%), while the next largest cohort is 55-64 years (33%) Our Twitter following took off in 2017, and it is an effective platform to reach eg. the Arctic Council and its various working groups. The platform has a heavy emphasis on science and policy, which is considered to suit our core messages well.

[Youtube \(www.youtube.com/user/icrh\)](http://www.youtube.com/user/icrh)

ICR has a channel on YouTube for outreach of videos, which in 2017 ICR attracted over 15 000 views, for an average of 3 minutes. The videos on this Youtube-channel are all in house productions. The most popular videos in 2017 were *Keepers of the Land* (21 782 minutes), *ЭАЛАТ – Люди и олени в меняющемся климате* (13 959 minutes) and *EALAT People and Reindeer* (2 987 minutes)

As for playback locations, users in Russia watched the most amount of minutes on our Youtube channel, followed by USA, Canada, Norway, UK, Sweden, Finland. Posting of the 35 minute EALAT video in Russian in 2017 saw a substantial Russian traffic for the first time on this platform, suggesting an untapped potential for Russian language views.

3.5.3.2 UNEP Nomadic Herders Project (*)

The Centre has delivered the *UNEP Nomadic Herders Program* application, ie. through the implementation of the GEF Project Preparation Grant (PPG) pre-project, together with WRH and UNEP/ GRID-Arendal already in 2013. There has been done a range of refinements and developments of the main application since then, in close dialogue with UNEP. The final decision for approval of the main project has not yet been made by GEF, due to challenges in GEF Washington allegedly relating to G7 sanctions on Russia. In 2017, the efforts of ICR has focused on supporting WRH in trying to address these issues with affected national states and regions, while maintaining contact and engagement locally. While the situation is not yet clarified, some progress has been made in partnership with WRH.

The Nomadic Herders project is especially important because of its focus and potential significance for the very challenged taiga reindeer herding peoples and regions, cf. the Jåhkâmâhkke Declaration of 2017.

As part of the Nomadic Herders concept, ICR applied and were awarded funding from the Norwegian Ministry of Climate and Environment for the project *Nomadic Herders Sápmi*. This project represented the Scandinavian part of Nomadic Herders, and focused on two main areas/ work packages:

- Developing Biodiversity Change Scenarios for the Barents region following the Globio3 methodology, as input to the Arctic Council AACA-C Barents report.
- Developing a course in Biodiversity and Traditional Knowledge for circumpolar reindeer herding youth, within the UArctic EALÁT Institute network.

Work on this project was started up the autumn of 2015, and was finalized in 2017.

3.5.3.3 Course in Circumpolar Reindeer Husbandry – Outreach Towards Authorities

Regional and national authorities have been actively involved in professional seminars and workshops linked to SDWG EALLU and Nomadic Herders, including lectures and discussions by key ICR and WRH personnel and reindeer herding students. In addition, status and findings from regional EALLU sites and activities and CAFF Nomadic Herders have been continuously reported to the Arctic Council system, primarily national authority

experts in SDWG and CAFF. While the Centre is seeking funding to re-run the UArctic Master Course entitled “*Adaptation to Globalisation in the Arctic: The Case of Reindeer Husbandry*” (AGA) and the “*Course on Biodiversity and Traditional Knowledge (CBD 8J)*”, these initiatives together with the Training of Future Arctic Leaders concept forms building blocks for the Centre’s efforts towards outreach and training of also local authorities.

3.5.3.4 UArctic EALÁT Institute at ICR and Course Development

Please see also 2.5.5.2 UArctic EALÁT Institute at ICR.

In the period, the work has been concentrated on the “Training of Future Arctic Leaders” concept, developed by ICR within the framework of UArctic EALÁT Institute. In a joint effort together with the SDWG EALLU project, ICR has coordinated training programs for reindeer youth in 2015-2017, also as part of the further development of this course concept. This work is linked to the RCN Rievdan project, AIPCI and Arctic Council EALLU.

3.5.3.5 The Rievdan Project *)

In 2014, Sámi University of Applied Sciences (SUAS) together with ICR developed and submitted the Rievdan project to the Research Council of Norway. Rievdan has an overarching goal to build up a master program in reindeer herding at SUAS. The project achieved funding, and final agreements with the Research Council and SUAS was signed in 2015. ICR has responsibility for WP3 and partially WP4 in the project, focusing on food culture and outreach, respectively. In the period, ICR has planned and implemented its components of the project, and reported this to SUAS both in project meetings and by formal reports. There has been delivered 8 articles, two books, and a range of science abstracts. See also list of publications.

There has been good progress on outreach and knowledge development activities, and especially so regarding EALLU and Rievdan, as well as the ReindeerPortal including social media. GEF/ UNEP Nomadic Herders has also had good progress, the external conditions taken into account.



Pic: Canadian Reindeer Herd. N. Dory, 2014.

3.5.4 Contact, Cooperation and Network Building within Reindeer Husbandry:

The Centre shall establish contact and communication between world reindeer herding peoples, and between reindeer husbandry and other entities. The cooperation with WRH is a critical condition for this, and so assistance to WRH is a key element in the Centre’s strategy.

3.5.4.1 Support to WRHs Secretariat (*)

In supporting WRH, the Centre has been assisting WRH in its international work as well as helping in planning and arranging WRH Executive Board meetings, Council meetings and the 6th World Reindeer Herders' Congress. In the period, the Boards of ICR and WRH made an agreement that ICR would organize WRH's international secretariat, and where the current Director of ICR now also leads this secretariat. As before, assistance in WRHs work in the Arctic Council has been a main focus, as well as support to WRHs administrative work. In 2017, ICR was heavily involved in the planning of the 6th World Reindeer Herders' Congress, that was successfully implemented in Jåhkåmåhkke, Sweden, August 16-20, 2017. As part of this, the Centre took part in work and meetings between WRH and partners about planning of the Congress. ICR also had the responsibility to plan and implement the professional components of the Congress, including Reindeer Herders' Professional Day, and has been engaged in this work in the period. While there have been contributions made to projects and initiatives of WRH, including special efforts to implement 6WRHC, it has not been possible to contribute a regular full position to WRHs work (as recommended by the Inter-Ministerial Working Group in 2004).

3.5.4.2 International Network of Reindeer Herders' Information Centres

In the period, there has been ongoing work to establish several new centres, including the following initiatives/ regions:

- Centre for Taiga Reindeer Husbandry, Tsaganuur, Mongolia.
- Training Centre for Reindeer Husbandry, Teachers and Even Culture in Topolinoe, Sakha Republic, Russia.
- Nenets AO, Russia.
- Yamalo-Nenets AO, Russia.

In the period, ICR has had special emphasis on laying the foundations for establishment of the centers in Mongolia, Yamal and Topolinoe. ICR has continued developing plans for a possible training/ exchange concept for these centers, linked to UNEP/ GEF Nomadic Herders.

3.5.4.3 Arctic Council EALLU: Indigenous Youth, Climate Change and Food Culture (*)

ICR together with WRH was able to achieve good progress for the EALLU initiative in the period, in dialogue and interaction with the Arctic Council and co-leads Norway, Russia, USA, Canada, Greenland/Denmark, Saami Council and AIA, as well as with all the other Permanent Participants of the Arctic Council, along with a few observer organisations.

Activities of SDWG EALLU in 2017 includes the following community-based youth workshops, science seminars and activities:

- EALLU/ Rievdan Knowledge and Indigenous Food Systems, Kautokeino, Norway February 1-3, 2017 (held in relation to the CAFF Board Meeting and 25 Years Anniversary in Kautokeino)
- AMAP Science Conference – EALLU, Presentation, April 24-27, 2017
- EALLU Arctic Indigenous Cuisine EXPO. Arctic Territory of Dialogue Forum. Archangelsk March 28-29, 2017

- EALLU workshop at the Northern Treasures Conference, Moscow April 28-30
- Launching workshop in relation to the Arctic Council Ministerial Meeting, UAF, Fairbanks May 10, 2017
- 6th World Reindeer Herders' Congress, Jokkmokk, Sweden, August 16-20, 2017
- Herzen Reality of Ethnos Conference, Saint Petersburg, Russia, November 22-23, 2017

While one has been able to implement activities together with other ICR projects and initiatives, the project have yet to achieve basic funding for project management and coordination of deliverables production. Applications have been submitted/ revised to the Norwegian MFA, Nordic Council of Ministers, the Barents Secretariat, and others.

The project has consistently been reported in to the Arctic Council SDWG/ SAO meetings through presentations and materials, and through the standard reporting mechanisms of the Arctic Council. The general project work has been based on collaboration with WRH member organisations, local indigenous institutions, business actors, as well as regional authorities. There has also been positive collaboration with all PPs and several observers in terms of practical implementation.

ICR and WRH have together produced a formal Arctic Council deliverable – an Arctic Council Food Book - presented at the Arctic Council Ministerial Meeting in Fairbanks in May 2017. The draft report including policy recommendations was submitted by the SDWG deadline January 5, 2017.

In December 2017, it was announced that the EALLU Food Book was nominated for the International Gourmand Cookbook Awards 2018, in several categories. This shows that the work of ICR and WRH in the Arctic Council is gaining global attention, and it represents a very important recognition of the work of our circumpolar team of young indigenous co-authors and the ICR editorial team led by Philip Burgess.

Based on the work and project recommendations of SDWG EALLU and efforts of WRH, point #22 of the last Arctic Council Ministerial Meeting Declaration reads:

“...encourage the establishment of a program for training indigenous youth in the documentation of traditional knowledge related to food, food entrepreneurship and innovation”. The Fairbanks Declaration, on the Occasion of the 10th Ministerial Meeting of the Arctic Council, Fairbanks, Alaska, US, May 11, 2017.

As for cooperation and network building in reindeer husbandry, the Arctic Council EALLU Project has had very good progress, as a cornerstone project of WRH and the Centre in the Arctic Council. There has been good progress regarding regional information centers concerning initiated processes in new regions. The support to WRH has been focused on planning, implementing and reporting the 6WRHC, which was successfully implemented in Sweden in 2017.

3.5.5. Contact, Cooperation and Network Building in Research and Professional Environments of the North:

The Arctic Council and UArctic are considered key collaborative bodies and arenas with regard to the research, education and professional environments of the north. The long-term goal of the Centre is to build up the knowledge on reindeer husbandry in the Arctic Council system and UArctic, and to earn and maintain a role as the key knowledge provider on circumpolar reindeer husbandry on these key arenas.

3.5.5.1 Participation in Arctic Council (*)

The Centre has participated together with WRH on all the most important meetings in Arctic Council in 2017, with the long-term aim to build an international network for knowledge exchange and collaboration. Work has been concentrated on the SDWG EALLU project, Arctic Resilience Report (ARR/ ARA), AMAP Adaptation Action to a Changing Arctic (AACA), CAFF Nomadic Herders, as well as observer-related issues and more.

The Centre has a continued involvement in the Arctic Resilience Report/ Arctic Resilience Assessment (ARR/ ARA), as led by Stockholm Resilience Centre. ICR is also involved in the large assessment AMAP Adaptation Action to a Changing Arctic (AACA), Barents Chapter, together with WRH and Saami Council.

Together with WRH and UEI, the Centre hosted the CAFF Board Meeting and the Official 25 Years Anniversary in Kautokeino, January 31-February 2.

Other participation, in collaboration with WRH and the Saami Council:

- Anna Degteva: Coordinating Lead Author for AACA Barents Chapter 6 Impact Assessment. Also including other contributions to the AACA Barents Chapter teams (Lead Authors, Corresponding Authors).
- Svein D. Mathiesen: Participant in the Arctic Council Task Force on Strengthening Scientific Cooperation in the Arctic.
- Anders Oskal: Governing Committee and Council Member of the Arctic Economic Council.

3.5.5.2 UArctic EALÁT Institute at ICR (*)

The University of the Arctic Institute for Circumpolar Reindeer Husbandry: UArctic EALÁT Institute, was formally established the 5th November 2010.

The institutional framework of the institute have been further developed in 2016, including efforts along with the agreements with institutions within the IPY EALÁT Legacy networks. The Centre has the responsibility for international coordination of the UArctic EALÁT Institute. Prof. PhD Svein D Mathiesen has functioned as Institute Lead in the period, while Prof. PhD Robert W Corell has been engaged as a Special Scientific Advisor/ UEI Professor II. The Executive Director and the whole range of ICR employees have also all been involved in the work of the Institute, to variable degrees.

The UArctic EALÁT Institute has been engaged in a wide spectrum of knowledge challenges for circumpolar reindeer herding in the period, including education, training, traditional knowledge, information and outreach.

Activities of UArctic EALÁT Institute at ICR in the period includes:

- Various activities on indigenous peoples food cultures, held at the Institute of Northern Indigenous Peoples at Herzen University in St.Petersburg, Russia.
- Various outreach events on indigenous peoples' food culture and food systems, including activities under Arctic Council EALLU and RCN Rievdan.
- The Centre has participated in various UArctic activities and seminars.
- The Centre has applied for funding for different Institute courses, under decision.

The Centre has closely followed up the Arctic Council work on key issues for reindeer husbandry. As for the UArctic network, cornerstone achievements include the Biological Diversity and Traditional Knowledge Course, Training of Future Arctic Leaders program and development of other programs.

3.5.6. Open Post - Other Activities and Initiatives:

The Centre has also been engaged in a range of other activities and initiatives, of which some are reported here. They have been contributing to fulfill the purposes of the Centre in different ways, within the Centre's field of operations. This includes network building, participation in meetings/ seminars etc. related to traditional knowledge, participation related to national and regional reindeer herders' NGOs and authorities, planning, implementation and participation on professional seminars, conferences, workshops etc., work towards national and international media, lectures for indigenous students and in different forums. Activities are listed below (in no particular order).

3.5.6.1 Meetings, Conferences, Hosting Delegations and More

The Centre has taken part in a wide diversity of different activities in the period, some of which are listed below.

- Arctic Frontiers, Tromsø, Norway
- Arctic Circle, Reykjavik, Iceland
- Arctic Circle Forum, Aberdeen, Scotland
- High North Dialogue, Bodø, Norway
- Arctic – Territory of Dialogue, Arkhangelsk, Russia
- UIC Arctic Business Development Tour, Utpeagvik, Alaska, March 7-9
- Visit incl. field trip with Norwegian Ministry of Foreign Affairs and Ministry of Regional Government and Modernisation
- AMAP Science Conference, Virginia, US, March 24-27
- Northern Treasures Congress, Moscow, Russia, April 28-30
- US Embassy Arctic Council Reception, Oslo, Norway,
- IASSA ICASS, Umeå, Sweden, June 8-11
- EAT Forum, Stockholm, Sweden, June 12-13
- EU H2020 Interact Consortium Meeting, Longyearbyen, Svalbard, October 21-25

- EU H2020 Interact Meeting, Salekhard, Yamalo-Nenets AO, Russia, October 31- November 3
- Reality of Ethnos Conference, Herzen University, Institute of Indigenous Peoples of the North, November 22-23
- A, Danish Ministry of Foreign Affairs, Copenhagen, Denmark, December 1
- Hosting visit from the Charge D'Affairs James deHart of the US Embassy to Norway, Karasjok, December 4-5
- Oslo Peace Prize Forum, on Indigenous Peoples & Industry, Oslo, Norway, December 11
- Other activities, not listed.

3.5.6.2 Participation in Relevant Forums and Networks

- The Centre has actively participated at various meetings and activities of UArctic.
- The Centre has actively participated in the Arctic Economic Council (AEC), as the Executive Director of ICR is a council member of AEC.
- The Centre has participated at meetings of the Norwegian-Russian Chamber of Commerce, as a member of this forum.
- The Centre has participated in the Arctic Circle, also as the Executive Director of ICR is a member of the Arctic Circle Advisory Board.

3.5.6.3 Planning and Implementation of Professional Seminars, Conferences, Workshops etc.

- Through the Arctic Council EALLU project and the GEF/ UNEP Nomadic Herders project and more, ICR has arranged a diversity of international seminars and community-based workshops in circumpolar reindeer herding areas in the period. (Please refer to separate mentioning of this above.)

3.5.6.4 Work towards National and International Media

- The Centre has received a lot of international media focusing on indigenous peoples in the north, reindeer herding and global change.
- One has focused media work in relation to ICR events and participation in different forums, for example:
 - EALLU and Rievdan events (various media, including local media)
 - Nomadic Herders events (various media, including local media)

3.5.6.5 Lectures for Indigenous Students or in Different Forums

The Centre has given various other lectures in the period, including for:

- Students in reindeer herding etc. at Sámi University College in Kautokeino
- Students at Herzen University in St.Petersburg, Russia
- Students at the Upper Secondary and Reindeer School in Kautokeino
- EALLU Youth participating at events during the year.

3.5.6.6 Initiation and Participation in Joint Projects on Knowledge Development, Traditional Knowledge, Training and Information

- As part of the *RCN Rievdan Project*, there was produced different articles in the period, see under ICR publications.

- The efforts of the Birgen project has been sought continued through the work with the Arctic Indigenous Peoples' Culinary Institute, where womens' roles and traditional knowledge on food culture and raw materials is a key part of the concept. Such continuation needs to be worked on next year. Given the fact that there has not been any core project funding for Birgen in the period, the progress on the follow-up has been good. The Calendar showing traditional knowledge over the reindeer herding year was promoted, as well as the Birgen photo exhibit on women in reindeer herding, at different venues including at the 6th World Reindeer Herders' Congress.

3.5.6.7 Other Activities

Together with WRH, ICR has also contributed to the UNEP Gap Analysis on Pastoralism, following the UNEA Resolution on Sustainable Rangelands and Pastoralism.

The Centre has been accredited by the European Commission Research Executive Agency Validation Services in Brussels, qualifying ICR for EU Horizon 2020 research participation.

Concerning other activities, the Centre has achieved much within the main goals of the Centre, with limited resources. Several of these activities and initiatives have shown strategic potential for the Centre, and have had significant positive impact on other operations, projects and initiatives of the Centre.



Pic: EALLU team of reindeer youth preparing traditional foods at the Norwegian Embassy Reception in Moscow. ICR, 2016.

Part IV - Management Control at the Centre

4.1 Management Control Systems

The Centre's Management Control Systems are centered around the standard Full-Service Solution provided by the Norwegian Government Agency for Financial Management (DFØ). These solutions have been designed to fulfil all requirements for financial management in Norwegian State Agencies.

The Centre further utilizes the standard ethical guidelines for the State sector in Norway, and has its own separate ethical framework document for handling of traditional knowledge of indigenous societies. In addition, the Centre has developed separate routines for internal and external reporting of any irregular activities, or so-called whistle-blowing. These routines are subject to discussions at Office staff meetings and/ or personnel seminars at ICR.

4.2 Risk Management Tools

The Centre has developed a risk-management tool, also refined through its own experiences since its inception. This tool is based on core risk-management parameters such as probabilities, consequences and adaptive measures, and is connected to the professional goals of the Centre as defined by the ICR Strategic Plan. The risk tool and its basic data is reviewed regularly, including through Office staff meetings and/ or personnel seminars, and is also subject to discussion at the semi-annual meetings with the Ministry of Local Government and Modernisation. The risk management tool is handled by the Board as an addendum to the ICR Strategic Plan.

4.3 Working Environment and the Outer Environment

The offices at the LES-building are well suited for the Centre's activities, providing a good working environment. The regional reindeer husbandry administration is also currently located in LES, as well as the Sámi newspaper Ávvir, representing both a relevant professional environment and a gathering point for reindeer herders as a primary target group of the Centre.

The Centre seeks to actively work with reduction of sick-leaves, inclusion of people with reduced working capacities, as well as continued engagement of older employees. The rate of absence at the Centre has been registered to less than 1% in the period, and has been consistently low the last years.

The Centre uses digital means of communication in its work, such as e-mail, Skype, videoconferencing and other electronic tools. It is necessary to use these means of communication because of the vast geographical region in which the Centre works and for financial reasons. Furthermore, the Centre only sends out Board case documents electronically. These priorities are also necessary to maintain the outer environment. The Board is of the opinion that the work of the Centre does not pollute the outer environment.

4.4. Gender Equality and Diversity

Of the 6 members of the Board, 3 are men and 3 are women. This means that there are 50 % of each gender on the Board. In addition, the Chair of the Board, carrying a double vote, is a woman.

In the administration men have been employed in positions equaling ca 3,1 man-labour years in the current period, while women have been employed equaling ca 4 man-labour years, including longer term temporary positions/ engagements (>1 year). It is important for the Centre to have an equal gender balance in the administration.

The Centre seeks to follow non-discrimination practices towards people's religious beliefs, sexual orientation and ethnicity.

4.5. Other Common Directives in the Letter of Award

Here follows a report on common directives given to the Centre in the Letters of Award, applied as far as they are relevant.

The following points have been initiated/ implemented in order to make ICR's work more efficient and simplifying regulations etc. (ie. reporting of '*tidstyver*' ('*time-thieves*'), listed in no particular order):

- Assessment/ streamlining of ICT-function and ICR-systems.
- Established VPN of more computers to exploit travelling/ waiting time for administrative work.
- Developed new templates for project budgeting and economic reporting of projects.
- Drafted new personnel regulations, ie. relating to administrative simplifications.
- Efforts to simplify Annual Reports.
- Implementation of virtual office meetings.

Throughout the year, ICR has been working on efficiency measures in terms of work processes and services. Among other things, ICR has implemented weekly virtual office meetings with its employees. This makes the work processes internally more efficient, given the international nature of the organisation.

When it comes to measures to give concrete effects for end users, ICR has prioritized increasing the Russian content on reindeerportal.org, in order to make ICR's work and outputs more available also for Russian speaking users.

Concerning apprentices:

ICR has not taken in an apprentice (lærling) in the period, but has generally assessed how this arrangement could be utilized in its future work. This includes consideration of the parts of the sc. Presidential program of the Confederation of Norwegian Enterprise (NHO) that is aimed at the public sector. Although no apprentice has been formally taken in for the period, ICR has nonetheless actively worked with including and engaging reindeer herding youth in different projects, processes and initiatives.

Concerning emergency and safety plans:

While ICR have offices at Diehtosiida, the emergency plan and concept developed is available for the Centre. Based on this, the Centre has also refined its plans for the rest of the office space, which will also be continuing into next year. The Centre has conducted and participated in safety/ fire drills in the period.

Concerning user assessments:

The Board of ICR and the Board of WRH has jointly wanted an assessment of ICR, and has initiated a congress in this regard, where a user assessment could be naturally included. The World Reindeer Herders' Congresses have provided direct input for ICR's work, for instance through the latest Aoluguya-Declaration. Efforts on considering mechanisms for meaningful user feedback will continue next year, in dialogue with WRH.

Concerning 'Klart Språk':

The Centre seeks to use a clear and understandable language in all its communications, internally and externally.

Concerning financial management at the Centre:

The Ministry of Local Government and Modernisation decided on a new Main Directive for Financial Management at ICR June 30, 2014. Based on this, the Centre has also developed an Internal Directive for Financial Management, to be further refined next year. See also points above.

Part V - Assessment of Future Prospects of the Centre

5.1 Planned Work in 2018 and Onwards

In the work plan for 2017 there are projects that will be continued in 2018 onwards. Here one would especially mention the work with Arctic Council EALLU project, the RCN Rievdan project, Arctic Indigenous Peoples' Culinary Institute, UArctic EALÁT Institute and course development, the ReindeerPortal.org, and the UNEP Nomadic Herders Project. The preparation and planning together with WRH of the World Reindeer Herders' Council Meetings will also be important. Further, work to follow-up and establish a network of and for local reindeer herding centres will be of importance.

Another area the Centre will have to focus on in 2018 and further, is the coordination of information and communication tasks in Russia, Mongolia, China and North-America, including gathering of information. In relation to this, the continued development work on the ReindeerPortal.org is key, where one seeks to ultimately reap the full benefits of modern information and communication technology for reindeer herders in a changing world, by building the ReindeerPortal.org into the best source of information on world reindeer husbandry. Development, evaluation and implementation of the course material on circumpolar reindeer husbandry will also continue. The same goes for the further development of the network of information centers in reindeer husbandry.

The Centre will continue to build competence about the Northern areas amongst youth working in reindeer husbandry. This will be done directly at the Centre and through recruitment. This task will also be vital in the future.

As the common statement of world reindeer herding peoples from the 6th World Reindeer Herders' Congress, the *Jáhkâmáhkke-Declaration* will have clear impacts and implications for the work of ICR, as a very important policy document for the professional work of the Centre.

5.2 Summing Up and Thoughts About the Future Work

The work of the Centre so far has shown that the need for such a Centre actually is much greater than initially assumed. The Centre has important functions in circumpolar reindeer husbandry and in the work with specialists and authorities in the high north, functions that were not taken care of before. The large activity in and around the Centre reveals that it fills both professional needs, knowledge needs and coordination needs for the different groups the Centre is working with. The Board would like to underline the important role of the Centre for the sustainable development in the high north, both seen from the cooperation with WRH and the Arctic Council, the work the Centre has done during IPY, in UArctic, in UNEP and the IPCC, as well as within the framework of the High North Strategy of the Norwegian Government.

Societal structures, infrastructure, institutions and organizations in reindeer husbandry are generally very diverse throughout the reindeer herding world. Infrastructure is often quite challenging in the most isolated reindeer herding communities, and many threatened

reindeer herding cultures today are to be found in the eastern parts of Eurasia. It is therefore necessary to continue and even strengthen the international focus of the Centre for it to succeed in its mandate to maintain a sustainable reindeer husbandry in the circumpolar areas. The composition of the Board of the Centre includes two representatives from Russia, meaning that the Board is better able to cover the geographical scope of the Centre, including regional networks and contacts.

Even though the Centre has come a long way since its startup in 2005, the work to establish its structure is not yet finished. There is still much work to be done to consolidate and develop the Centre into an international tool for circumpolar reindeer husbandry, not least seen in relation to the needs and the very serious, complex and diverse challenges of reindeer herding societies in the high north today. As such, the Centre will still be in a development phase for some time.

Due to the special current international situation, the Centre's work on true people-to-people collaboration between Arctic indigenous peoples is seen as more important than ever before. In a situation where the political cooperation is more challenging, and national economies are receding, there are clear dangers and experience that ordinary indigenous people are the first to feel negative impacts from this situation. Therefore it is of utmost importance that the Centre is properly equipped and made able to function as a real hub for transparent and concrete people-to-people collaboration across the circumpolar north. This will be of importance both to reindeer herding societies, the northern indigenous peoples, the Arctic region, as well as mainstream society.

As the Centre has expanded since its startup, there are now more activities and people involved than initially expected. The Centre moved its main administration into the LES building in Kautokeino in 2010, providing good space and working environment for the main base of employees, adequate location for profiling and so on. At the same time, the Centre still maintains connections to Diehtosiida in Kautokeino (the Sámi Science Building), with collaboration partners and projects.

Looking at the project portfolio of the Centre, it is however also clear that there are some limitations to further expansion of project activity in terms of the current basic funding.

Issues like translation and interpreting are natural parts of the work of an international Centre. This is a challenge that also has financial consequences. The Centre needs to use financial resources on this in order to be able to function internationally, especially in conjunction with the large reindeer husbandry regions in the east. The experience from 2006-2016 show that this represents a larger expense than initially thought, although some relief has been found in engagement of Russian speaking personnel. An interdepartmental committee assessed the establishment of the Centre in 2004. At that time it was envisaged that the Board would be comprised only of Norwegian citizens. This committee, and the Centre itself, have done some calculations and have come to the result that an international Board will double the expenses of the work of the Board when one includes translation and interpreting. The Board does not see it as possible to reduce these expenses if the Centre shall function according to its intentions. The traditional knowledge of the people engaged

in reindeer husbandry is also stored and accessible through different languages of the indigenous peoples in the high north. This is a challenge in itself.

The Board recommends that the financial basis of the Centre should be strengthened in future budgets so that the Centre will be better able to carry out its tasks and reach its goals in appropriate and rational ways. The Board wants that the following fields should be prioritized:

- The need for the Centre, its work and activity: It is clear that the need for the Centre internationally is much larger than assumed earlier. The Board sees that there is a clear need for strengthening the professional resources of the Centre, to meet the real challenges and needs that exist in international reindeer husbandry. It is therefore clearly necessary to increase the staff at the Centre, especially when focusing on the reindeer herding regions in Russia, Mongolia, China and North-America. It is also necessary to secure resources to establish a network for local reindeer herding centres.
- Arctic Indigenous Peoples' Culinary Institute: Because Arctic indigenous reindeer herders today are facing unprecedented change and therefore also specific challenges, it is of outmost importance to secure that also local indigenous communities are able to exploit possibilities arising from Arctic change. The establishment of a culinary institute for Arctic indigenous peoples represents a new approach to handle Arctic change, building on the traditional knowledge on food culture in the local communities in a new and positive way. Today, traditional food culture of Arctic indigenous peoples are hardly documented and used for local business development and value-added for reindeer herders. The issues of food security and food safety for indigenous peoples is also gaining international attention in face of Arctic change. This project is linked to the Arctic Council EALLU project, the RCN Rievdan project, the Biebmu network, as well as potential links with the BIRGEN project of the Women's Network in Reindeer Husbandry. Therefore, the Board stress the importance of this initiative by ICR and WRH, and urge the need to secure appropriate funding through ICR for such an initiative.
- Support to WRH: As another issue it has not been possible with the current situation to allocate one labour man-year for support to WRH, although this was recommended by the interdepartmental working group in 2004. This needs to be corrected because cooperation with WRH is a critical success factor for reaching the goals of the Centre, especially concerning maintaining and developing contacts with different regions of reindeer husbandry and the different reindeer herding peoples in the circumpolar north.
- Multilingualism: The expenses in connection with multilingualism in the Board and in the work of the Centre will exceed the calculated expenses in the report from the interdepartmental working group in 2004. This has got to do with the international composition of the Board and with expenses to translation and interpreting etc.

These conditions all mean that the budget for 2018 will be tight. This also puts a limit on the possibilities to handle further external funding for the professional activities of the Centre, even though financial opportunities for project funding may exist.

Part VI - Budget and Accounts for 2017

6.1 The Board's Comments to the Accounts for 2017

The International Centre for Reindeer Husbandry (ICR) was established by the Norwegian Government in 2005 in Kautokeino, as a contribution to the unique international cooperation of circumpolar reindeer herding peoples. ICR is an independent professional unit, with its own board and budget. Its core funding is provided by the Norwegian Government through annual grants from the budget of the Ministry of Local Government and Modernisation.

The annual accounts constitutes part VI of the annual report of ICR.

6.2 Confirmation

The financial statements are prepared in accordance with the regulation for financial management in the Norwegian State, circular R-115 from the Ministry of Finance, the Letter of Awards 2017 from the Ministry of Local Government and Modernisation, and the requirements for ICR in the Directive on financial management. The Board believes the accounts provide a comprehensive picture of the Centre's disposable appropriations, recorded expenses, revenues, assets and liabilities.

6.3 Assessment of Significant Issues

In 2017, ICR has disposed total grants of expenditure on chapter/ item 056 301 of NOK 6.397.000, cf. the appropriation report. Under-expenditure for item 01 was NOK 133.381. On chapter / item 356303 the hire income was NOK 63.245 lower than allocation, and will be deducted from under-expenditure for chapter/item 056301. Total sum transferred to the next year on chapter/ item 056301 according to the calculations in note B will thus be NOK 70.136. The reason for part of this lower hire income is that one hire income payment came in to our account after new year and will be on next year's account.

In addition, the Centre has grants of totally NOK 3.878.000 on chapter/ item 056 321 - Special operating costs, for charging costs of externally funded projects. The grant may be exceeded following corresponding additional income on chapter / item 356302, and may also be transferred to the next year so that project revenues received one year can be used for project expenditures the subsequent years, to the extent that the income comes before the expenses. The grant is at the same level as the income appropriation under chapter / item 356 302. The Centre has an over-consumption on chapter / item 056321 of NOK 147.525 and additional income on revenue account 356302 of NOK 348.161. This sums up to NOK 200.636 in all, which will be transferred to next year, in accordance with note B. The reason for this transfer from 2017 to 2018 is primarily due to grants on one multi-year project. This project has been postponed due to maternity leave period. The total is thus NOK 200.636, to be transferred to 2018.

6.4 The Framework for the Financial Management of the Centre

The Letter of Awards from the Ministry of Local Government and Modernisation, and the main Directive for the financial management at ICR as of June 30, 2014 lays out the framework for the management of the finances of the Centre. In these documents, there are regulations for financial management, routines and reports and also more detailed rules on the dialogue between ICR and the Ministry.

6.5 The Budget and Accounts for 2017

With reference to Board decision 15/16 Budget for 2017, the periodic economic report and prognosis to the Ministry by 31 August 2017, the Board's discussion and decision in case 20/17 Budget and Accounts for 2017, and the accounts for 2017 from Norwegian Directorate for Financial Management (DFØ), the following accounts for 2017 are found in the reporting list of grants at the end of this document.

The accounts show an under-consumption/result of NOK 70.136 for 2017 concerning the basic budget (ie. apart from projects). This is within the 5% transfer limit and will be applied transferred to 2018.

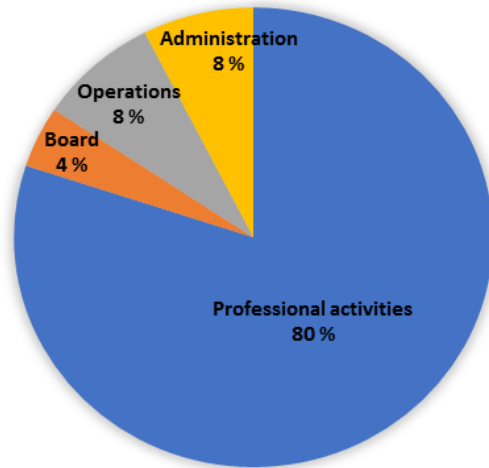
In 2015, there was created a new income post (056 303) for rental income. This has been utilized in 2017, also explaining in part the increase of other operating expenses.

There has been a larger travel activity due to high activity levels and meeting activities (cf. list of activities). Thus, the administration have balanced the budget by these factors.

In sum there is a surplus on project income of roughly NOK 200.636, largely due one larger multi -year project running into 2018 where the income has come before corresponding expenses.

Concerning the professional activities, administration and operations, travel costs have been high due to extensive professional activity in projects etc.

ACCOUNTS 2017



Based on expenditure and cost sites (and allocation of wages for administrative tasks and the Chair), the costs for administration and operations were around NOK 1 607 757 or around 16 % of the total account of the Centre in 2017. These shares are in line with figures from previous years.

Similarly, around NOK 8 681 386 or 84 % of the total expenditure in 2017 were allocated to professional activities, ie. projects and the Board's work. In other words, most of the Centre's resources are allocated to professional work, and only limited amounts on administration and operations. This is also in line with experiences from previous years.

With regards to Projects, the accounts show that ca. 39 % of the total income of the Centre for 2017 was external financing. This is a bit lower than year before, because of approx. NOK 1.500.000 lower project funding than 2016.

Net short-term debts per December 31, 2017 amounted to NOK 207 413, mainly consisting of tax deductions for the 6th term of 2017 and VAT (Tot. NOK 147 906). In addition there are accounts payable of NOK 72 819 due to payments with due dates are in 2018.

6.5.1 Additional Information

The Office of the Auditor General of Norway is the external auditor confirming the Centre's annual accounts. The audit report can be read on our website www.reindeerherding.org when it becomes publicly available.

Guovdageaidnu, Norway, February 23. 2018

Anders Oskal
Executive Director

Appendix: Note on Principles to the Annual Accounts

Annual accounts for government businesses are prepared and presented in accordance with further guidelines laid down in the regulations for financial management in the Norwegian State ("Regulations"), adopted 12 December 2003 with amendments, the latest of 05 November 2015. The annual accounts are in accordance with the requirements in the Regulations, section 3.4.1, specific decisions in circular note R-115 from the Ministry of Finance, and any additional requirements determined by own Ministry.

The reporting list of grants includes an upper part with a report of grants, and a lower part showing values that the business is listed up with in the capital accounts. The report of the ledger accounts has an upper part showing what is reported to the government accounts according standard plan for accounts for state businesses, and a lower part showing groups of accounts that are included in the account for national treasury.

The reporting list of grants and report of general ledger accounts are prepared of the base of the Regulations, section 3.4.2 - the basic principles of annual accounts:

- a) The accounts follow the calendar year
- b) The accounts contain report of all expenses and revenues for the financial year
- c) Expenses and revenues are kept in the accounts with the gross sum
- d) The accounts are prepared in accordance with the cash basis/principles

The reporting lists of grants and report of general ledger accounts are prepared according to the same principles, but grouped by various account plans. The principles correspond with the requirements in the Regulations, section 3.5 on how businesses must report to the government accounts. Total sum line "Net reported to the grants accounts" is similar in both lists.

All government businesses are affiliated with the state group accounts scheme in Norges Bank in accordance with the requirements in the Regulations, section. 3.7.1. Ordinary administrative agencies (gross budget businesses) are not supplied with available funds throughout the year. At the end of the year, the balance of the individual accounts is reset at the transition to a new year.

Reporting of grants

The reporting list of grants shows the business' accounts numbers reported to the government accounts. The report is listed up after chapters and items in the report of accounts, which the business has been given authority to dispose. The report shows all financial assets and liabilities of the business listed in the state capital accounts. The column for total grants shows what the business has been granted in the Letter of Awards for each combination of chapter/item.

The report on ledger accounts

The report on ledger accounts presents accounts numbers that the business has reported to the government accounts accordingly the standard plan for accounts state businesses. The enterprise has a credit facility for disposable awards on the consolidated accounts in Norges Bank. The supports shall not be recognized and therefore do not appear as revenue in the report.

Note 6 to the report on ledger accounts show differences between the settlement with the treasury and the state treasury.

Oppstilling av bevilgningsrapportering 2017

Utgiftskapittel	Kapittelnavn	Post	Posttekst	Note	Samlet tildeling*	Regnskap 2017	Merutgift (-) og mindretgift
0563	Driftsutgifter	01		A/B	6 397 000	6 263 619	133 381
0563	Spesielle driftsutgifter	21		A/B	3 878 000	4 025 525	-147 525
1633	Nettoordning for mva i staten	01			0	196 884	
<i>Sum utgiftsført</i>					10 275 000	10 486 028	
Inntektskapittel	Kapittelnavn	Post	Posttekst		Samlet tildeling*	Regnskap 2017	Merinntekt og mindreinntekt(-)
3563	Diverse inntekter	02		B	2 601 000	2 949 161	348 161
3563	Leieinntekter	03			357 000	293 755	-63 245
5309	Tilfeldige inntekter	29			0	7 500	
<i>Sum inntektsført</i>					2 958 000	3 250 417	
<i>Netto rapportert til bevilgningsregnskapet</i>						7 235 612	
Kapitalkontoer							
60089001	Norges Bank KK /innbetalinger					3 280 416	
60089002	Norges Bank KK/utbetalinger					-10 552 402	
706721	Endring i mellomværende med statskassen					36 374	
<i>Sum rapportert</i>						0	
Beholdninger rapportert til kapitalregnskapet (31.12)					16.12.2017	31.12.2016	Endring
706721	Mellomværende med statskassen				-134 594	-170 968	36 374

* Samlet tildeling skal ikke reduseres med eventuelle avgitte belastningsfullmakter. Se note B for nærmere forklaring.

Oppstilling av artskontorrapporteringen

	Note	2017	2016
Driftsinntekter rapportert til bevilgningsregnskapet			
Innbetalinger fra gebyrer	1	0	0
Innbetalinger fra tilskudd og overføringer	1	2 949 161	4 144 314
Salgs- og leieinnbetalinger	1	293 755	297 145
Andre innbetalinger	1	0	0
<i>Sum innbetalinger fra drift</i>		3 242 916	4 441 459
Driftsutgifter rapportert til bevilgningsregnskapet			
Utbetalinger til lønn	2	4 417 058	4 406 357
Andre utbetalinger til drift	3	5 869 974	5 920 191
<i>Sum utbetalinger til drift</i>		10 287 032	10 326 548
Netto rapporterte driftsutgifter		7 044 115	5 885 089
Investerings- og finansinntekter rapportert til bevilgningsregnskapet			
Innbetaling av finansinntekter	4	0	0
<i>Sum investerings- og finansinntekter</i>		0	0
Investerings- og finansutgifter rapportert til bevilgningsregnskapet			
Utbetaling til investeringer	5	0	79 641
Utbetaling til kjøp av aksjer	5,8B	0	0
Utbetaling av finansutgifter	4	2 112	1 462
<i>Sum investerings- og finansutgifter</i>		2 112	81 102
Netto rapporterte investerings- og finansutgifter		2 112	81 102
Innkrevingsvirksomhet og andre overføringer til staten			
Innbetaling av skatter, avgifter, gebyrer m.m.		0	0
<i>Sum innkrevingsvirksomhet og andre overføringer til staten</i>		0	0
Tilskuddsforvaltning og andre overføringer fra staten			
Utbetalinger av tilskudd og stønader		0	0
<i>Sum tilskuddsforvaltning og andre overføringer fra staten</i>		0	0

Inntekter og utgifter rapportert på felleskapitler *		
Gruppelivsforsikring konto 1985 (ref. kap. 5309, inntekt)	7 500	9 736
Arbeidsgiveravgift konto 1986 (ref. kap. 5700, inntekt)	0	0
Nettoføringsordning for merverdiavgift konto 1987 (ref. kap. 1633, utgift)	196 884	347 930
<i>Netto rapporterte utgifter på felleskapitler</i>	189 384	338 194
Netto rapportert til bevilgningsregnskapet	7 235 612	6 304 385

Oversikt over mellomværende med statskassen **

Eiendeler og gjeld	2017	2016
Fordringer	0	0
Kasse	0	0
Bankkontoer med statlige midler utenfor Norges Bank	0	0
Skyldig skattetrekk	-147 906	-184 282
Skyldige offentlige avgifter	13 312	13 314
Annen gjeld	0	0
Sum mellomværende med statskassen	6	-134 594

* Andre ev. inntekter/utgifter rapportert på felleskapitler spesifiseres på egne linjer ved behov.

** Spesifiser og legg til linjer ved behov.

Kontrollsum:

7 235 612

7 235 612

0

Note A Forklaring av samlet tildeling utgifter			
Kapittel og post	Overført fra i fjor	Årets tildelinger	Samlet tildeling
56 301	58 000	6 339 000	6 397 000
56 321	1 277 000	2 601 000	3 878 000
			0

Note B Forklaring til brukte fullmakter og beregning av mulig overførbart beløp til neste år

Kapittel og post	Stikkord	Merutgift(-)/ mindre utgift	Utgiftsført av andre iht. avgitte belastnings-fullmakter(-)	Merutgift(-)/ mindreutgift etter avgitte belastnings-fullmakter	Merinntekter / mindreinntekter(-) iht. merinntektsfullmakt	Omdisponering fra post 01 til 45 eller til post 01/21 fra neste års bevilgning	Innsparinger(-)	Sum grunnlag for overføring	Maks. overførbart beløp *	Mulig overførbart beløp beregnet av virksomheten
56 301		133 381		133 381	-63 245			70 136	316 950	70 136
56 321	kan overføres	-147525		-147 525	348 161			200 636		200 636

*Maksimalt beløp som kan overføres er 5% av årets bevilgning på driftspostene 01-29, unntatt post 24 eller sum av de siste to års bevilgning for poster med stikkordet "kan overføres". Se årlig rundskriv R-2 for mer detaljert informasjon om overføring av ubrukte bevilgninger.

Forklaring til bruk av budsjettfullmakter

Departementet har delegert til virksomheten fullmakt til å overskride driftsbevilgningen under kap 563 post 01 mot tilsvarende merinntekter på kap.3563 post 03, og fullmakt til å overskride driftsbevilgningen under kap. 563 post 21 mot tilsvarende merinntekter på kap.3563 post 02

Stikkordet «kan overføres»:

Det er opprettet en egen post for utgiftsføring av eksternt finansierte prosjekter. Formålet er å skille prosjektkostnader fra de ordinære driftskostnadene. Bevilgningen er på samme nivå som inntektsbevilgningen. Det er tilført stikkord «kan overføres» slik at prosjektinntekter som kommer inn ett år, kan benyttes til prosjektkostnader påfølgende år i den grad inntekter kommer før påløpte kostnader.

Mulig overførbart beløp:

Virksomhetens ubrukte bevilgning på kapittel /post 056301 beløper seg til kr. 70.136. Da dette beløpet er under 5% regnes hele beløpe som mulig overføring til neste budsjettår. Beløpet som står på kapittel/post 056321 kan overføres i sin helhet da stikkordet kan overføres er knyttet til kapittel/posten. Beløpet inngår i beregningen mulig overførbart beløp til neste år

Note 1 Innbetalinger fra drift

	2017	2016
<i>Innbetalinger fra gebyrer</i>		
<i>Sum innbetalinger fra gebyrer</i>	0	0
<i>Innbetalinger fra tilskudd og overføringer</i>		
Tilskudd fra andre statlige virksomheter	1 152 714	3 212 672
Tilskudd fra organisasjoner og stiftelser	441 144	0
Andre tilskudd og overføringer	1 355 303	931 642
<i>Sum innbetalinger fra tilskudd og overføringer</i>	2 949 161	4 144 314
<i>Salgs- og leieinnbetalinger</i>		
Tilfeldige inntekter (post 01, 02)	0	1 682
leieinntekter fast eiendom	293 755	295 463
<i>Sum salgs- og leieinnbetalinger</i>	293 755	297 145
<i>Andre innbetalinger</i>		
<i>Sum andre innbetalinger</i>	0	0
Sum innbetalinger fra drift	3 242 916	4 441 459

Note 2 Utbetalinger til lønn

	2017	2016
Lønn	3 421 023	4 000 141
Arbeidsgiveravgift	0	0
Pensjonsutgifter*	410 128	0
Sykepenger og andre refusjoner (-)	-34 180	-51 270
Andre ytelser	620 087	457 486
Sum utbetalinger til lønn	4 417 058	4 406 357
Antall årsverk:	8,3	9,2

* Nærmere om pensjonskostnader

For virksomheter som er omfattet av rundskriv R-118

Fra og med 1.januar 2017 betaler virksomheten pensjonspremie til SPK. For 2017 er arbeidsgivers andel av pensjonspremien 12 prosent.

For virksomheter som har betalt pensjonspremie til SPK før 2017 og dermed ikke er omfattet av rundskriv R-118

Pensjoner kostnadsføres i resultatregnskapet basert på faktisk påløpt premie for regnskapsåret. Premiesats for 2017 er xx,x prosent. Premiesatsen for 2016 var yy,y prosent.

Note 3 Andre utbetalinger til drift

	2017	2016
Husleie	581 555	586 227
Vedlikehold egne bygg og anlegg	0	0
Vedlikehold og ombygging av leide lokaler	0	0
Andre utgifter til drift av eiendom og lokaler	51 963	64 138
Reparasjon og vedlikehold av maskiner, utstyr mv.	0	0
Mindre utstysanskaffelser	50 661	79 438
Leie av maskiner, inventar og lignende	20 691	19 602
Kjøp av fremmede tjenester	1 050 412	1 425 604
Reiser og diett	2 023 276	2 492 188
Øvrige driftsutgifter	2 091 415	1 252 994
Sum andre utbetalinger til drift	5 869 974	5 920 191

Note 4 Finansinntekter og finansutgifter

	2017	2016
<i>Innbetaling av finansinntekter</i>		
Renteinntekter	0	0
Valutagevinst	0	0
Annen finansinntekt	0	0
Sum innbetaling av finansinntekter	0	0

	2017	2016
<i>Utbetaling av finansutgifter</i>		
Renteutgifter	2 112	1 462
Valutatap	0	0
Annen finansutgift	0	0
Sum utbetaling av finansutgifter	2 112	1 462

Note 5 Utbetaling til investeringer og kjøp av aksjer

	2017	2016
<i>Utbetaling til investeringer</i>		
Immaterielle eiendeler og lignende	0	0
Tomter, bygninger og annen fast eiendom	0	0
Beredskapsanskaffelser	0	0
Infrastruktureiendeler	0	0
Maskiner og transportmidler	0	0
Driftsløsøre, inventar, verktøy og lignende	0	79 641
Sum utbetaling til investeringer	0	79 641

	2017	2016
<i>Utbetaling til kjøp av aksjer</i>		
Kapitalinnskudd	0	0
Obligasjoner	0	0
Investeringer i aksjer og andeler	0	0
Sum utbetaling til kjøp av aksjer	0	0

Note 6 Sammenheng mellom avregning med statskassen og mellomværende med statskassen.

Del A Forskjellen mellom avregning med statskassen og mellomværende med statskassen

	2017	2017	Forskjell
	Spesifisering av <u>bolført</u> avregning med statskassen	Spesifisering av <u>rapportert</u> mellomværende med	
Finansielle anleggsmidler			
Investeringer i aksjer og andeler*	0	0	0
Obligasjoner	0	0	0
Sum	0	0	0
Omløpsmidler			
Kundefordringer	0	0	0
Andre fordringer	0	0	0
Bankinnskudd, kontanter og lignende	0	0	0
Sum	0	0	0
Langsiktig gjeld			
Annen langsiktig gjeld	0	0	0
Sum	0	0	0
Kortsiktig gjeld			
Leverandørgjeld	-72 819	0	-72 819
Skyldig skattetrekk	-147 906	-147 906	0
Skyldige offentlige avgifter	13 312	13 312	0
Annen kortsiktig gjeld	0	0	0
Sum	-207 413	-134 594	-72 819
Sum	-207 413	-134 594	-72 819

* Virksomheter som eier finansielle anleggsmidler i form av investeringer i aksjer og selskapsandeler fyller også ut note 8 B

Del B Spesifisering av investeringer i aksjer og selskapsandeler

	Ervervsdato	Antall aksjer	Eierandel	Stemmeand	Årets resultat i selskapet	Balanseført egenkapital i selskapet	Balanseført verdi i regnskap*
Aksjer							
Selskap 1							
Selskap 2							
Selskap 3							
Balanseført verdi 16.12.2017							0

* Investeringer i aksjer er bolført til anskaffelseskost. Balanseført verdi er den samme i både virksomhetens kontospesifisering og kapitalregnskap