



Urban landbruk

HVA MÅ TIL FOR Å FÅ DET TIL Å BLOMSTRE?

KRISTIN REICHBORN-KJENNERUD. OSLOMET – STORBYUNIVERSITETET 18.11.2019

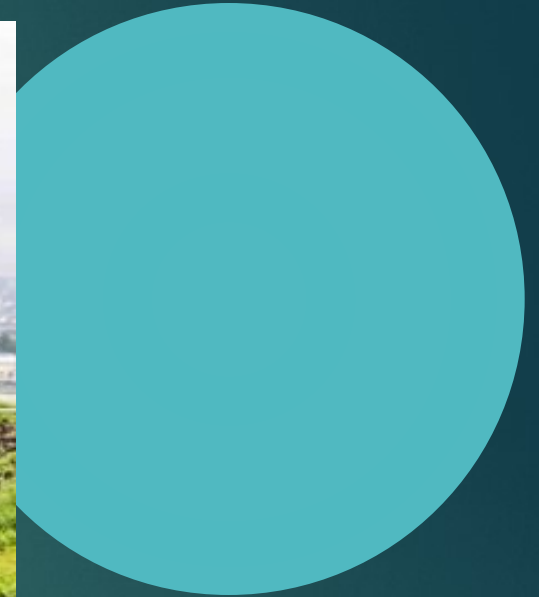
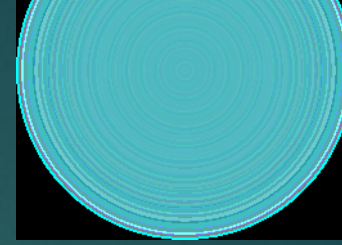
Produksjon og salg av mat på 70-tallet



Produksjon og salg av mat nå



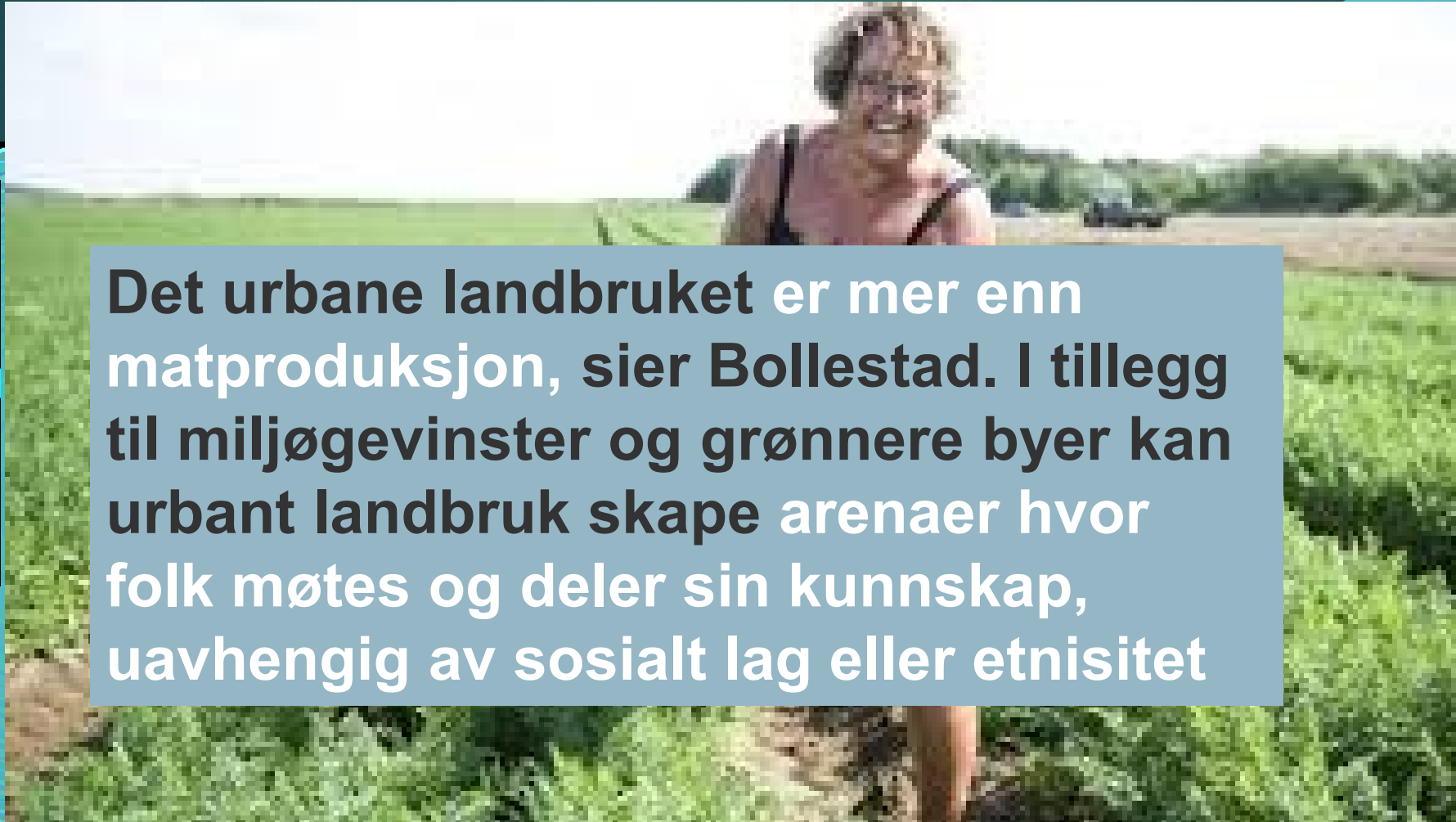
Takdyrking – The Hub



Innedyrking – Tåsen Microgreens

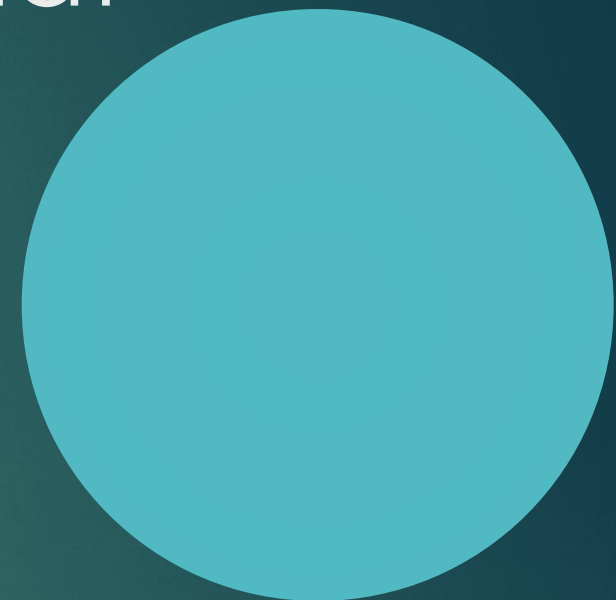
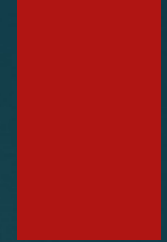


Urbant landbruk – primært en sosial funksjon?



Det urbane landbruket er mer enn matproduksjon, sier Bollestad. I tillegg til miljøgevinster og grønnere byer kan urbant landbruk skape arenaer hvor folk møtes og deler sin kunnskap, uavhengig av sosialt lag eller etnisitet

Vanskelig for offentlige organisasjoner å kjøpe lokal mat



Selvom alle sier det er det de ønsker





1.
Edible Cities
Network

-EdiCitNet; Integrating Edible City Solutions for socially resilient and sustainably productive cities.

BAKGRUNN

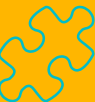


- ← Horisont 2020 er et forskningsprogram under EU-kommisjonen
- ← Programmet er verdens største forsknings- og innovasjonsprogram med 80 milliarder euro fordelt på sju år.
- ← Norske bedrifter og forskningsmiljøer kan delta på linje med kolleger og konkurrenter i andre europeiske land.



European
Commission

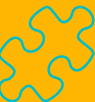
Horizon 2020
European Union funding
for Research & Innovation



Oslos mandat



- ← **Oslos mandat i prosjektet:**
- ← Å prøve ut 3-5 ulike økonomiske modeller for sosialt entreprenørskap innen urbant landbruk
- ← Linderud gård og den områdebaserte satsingen er det geografiske utgangspunktet for prosjektet i Oslo
- ← Nabolagshager er sentral i å rekruttere og lære opp sosiale entreprenører



Partnere og deltakere

UNIVERSITETER

TU Berlin* (DE)

Humboldt U* (DE)

OSLOMET (NO)

U Brighton (UK)

U Girona (ES)

U Ljubljani (SL)

U Wien (AT)

BOKU (AT)

RMIT Madrid (ES)

U Wageningen (NL)

Peking U (CN)

LEDERBYER

Oslo (NO)

Rotterdam (NL)

Berlin (DE)

Andernach (DE)

Havanna (CU)

FØLGERBYER

Kartago (TN)

Montevideo (UR)

StFeliuLlobregat(ES)

Wenquan (CN)

Lomé (TG)

ObcinSempVrto(SL)

Berlin* (DE)

Letchworth (UK)

ANDRE

Nabolagshager

NIBIO

FundacionSolidaritat(ES)

CatInstWatrResearch(ES)

BrightonHoveFoodPolicy(UK)

Dachgärtner Verbund(DE)

TransitionOststeier (AT)

EuroMedWaterInfo(FR)

Research In Action (TN)

Hidrolab (SL)

MundRaub (DE)

Nolde&Partner (DE)

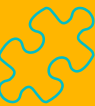


BAKGRUNN



What are Edible City Solutions?

Edible city solutions include urban farming, agro-forestry, aquaculture, biomass production for energy and productive purposes, and closed loop systems for water, nutrient, and waste management.



Our expertise to foster ECS

We facilitate and help the Living Laboratories (ULL) in 5 Front-Runner Cities (FRC) for WP3. We also have a role as expert evaluator for WP 5.

Oslomet/AFI will contribute in producing the best practice methodology, KPIs and standard operating procedures that will secure appropriately upscaled Edible City Solution demos in the FRC.

The picture below is from the Oslo Living Lab at the Linderud farm.



The picture below is from Nabolagshager, a green, sustainable and social business in Oslo with a rooftop garden.



Our Team

Kristin Reichborn-Kjennerud (PhD) is a political scientist and sociologist that also has formal education in management and audit. She is an expert on evaluation and has been and currently is engaged in several projects on urban governance and -development. Her research interests are in democracy and the organization for co-decisionmaking in urban regeneration processes. Also, she is interested in co-creation, urban governance related to innovation/entrepreneurship and the quality of government. Kristin is currently engaged in a project on urban governance, participatory democracy and ICT (DEMUDIG) financed by the Norwegian Research Council



Our best practice examples

AFI is a work research institute which forms part of the Oslo Metropolitan University. Our core competencies lies in participatory democracy/co-creation, worklife-, innovation- and entrepreneurship research as well as evaluation and monitoring.

AFI currently conducts a project (DEMUDIG) on co-creation and participatory democracy in three cities (Oslo, Madrid and Melbourne) that is relevant both in content and methods for EdiCitNet .

The picture below is from an urban garden in Madrid: „Esto es una plaza“



AFI has, since 1964, been the leading action research institute in Norway. AFI's methodologies are diverse ranging from visualizing tools, think tanks, dynamic learning arenas, dialogue conferences, citizen science methodology and more.

Our Role in the Project