

# European Rural Networks

## What works, what doesn't and what is needed

Paul Soto, *ENRD CP*

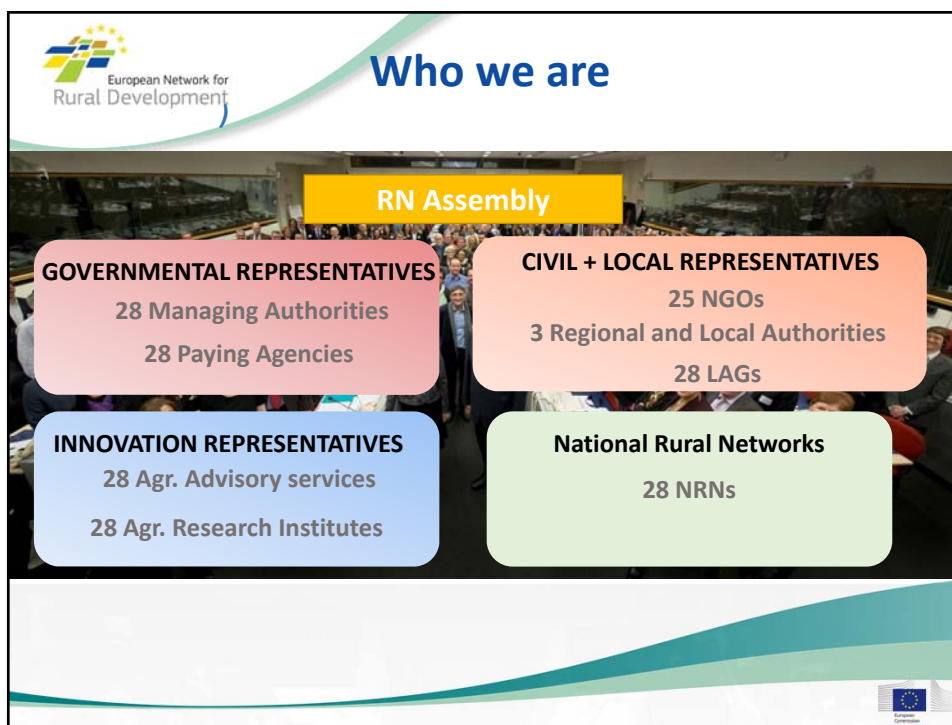
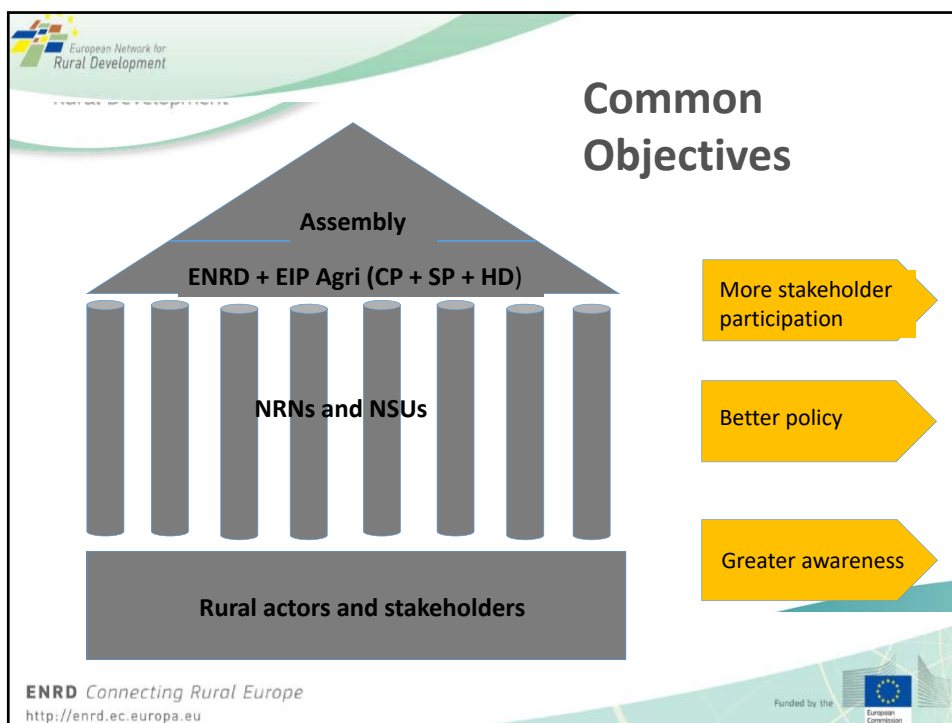
Oslo – 31 May 2018

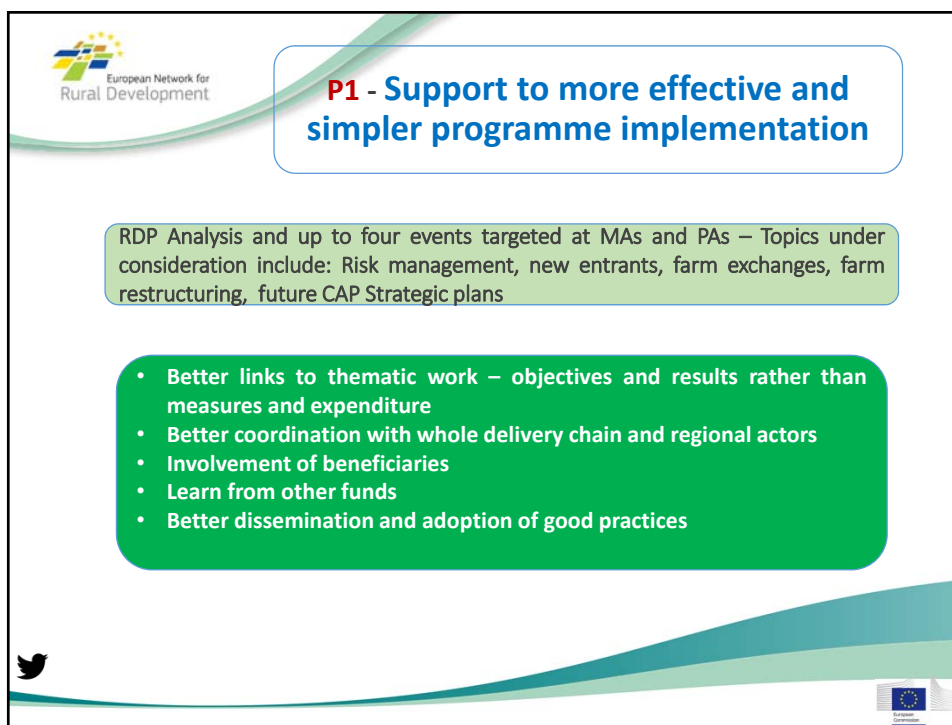
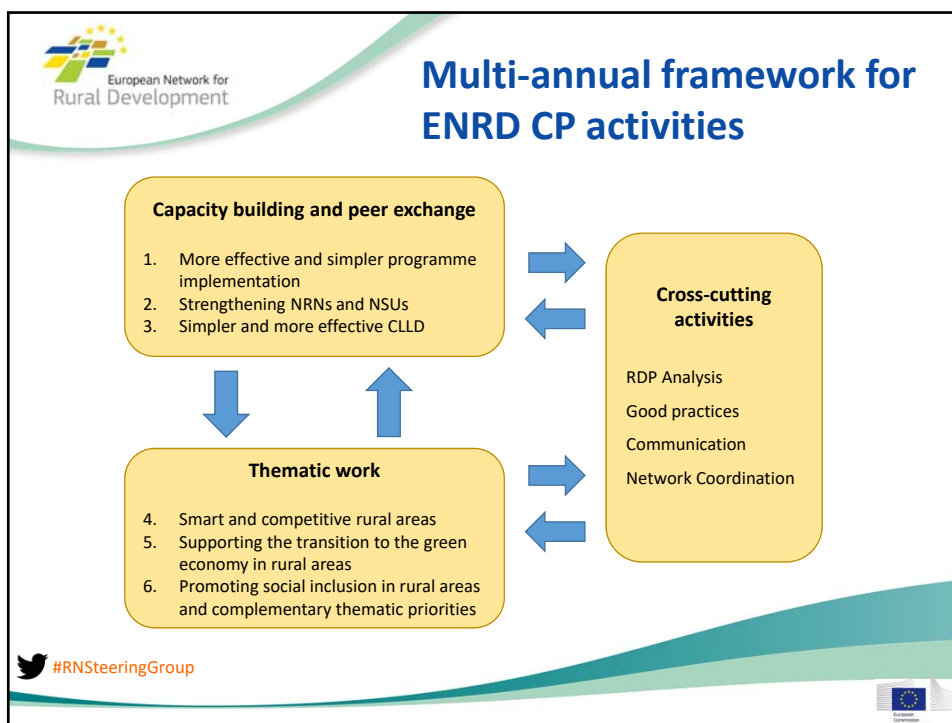


## Who we are

*European Rural Networks Assembly*













## P2 Strengthening NRNs



Working more closely with Agricultural, Environmental, Territorial, and Social organisations




Peer-to-peer exchanges & Multi-speed clusters


## P3 – Simpler and more effective LEADER / CLLD

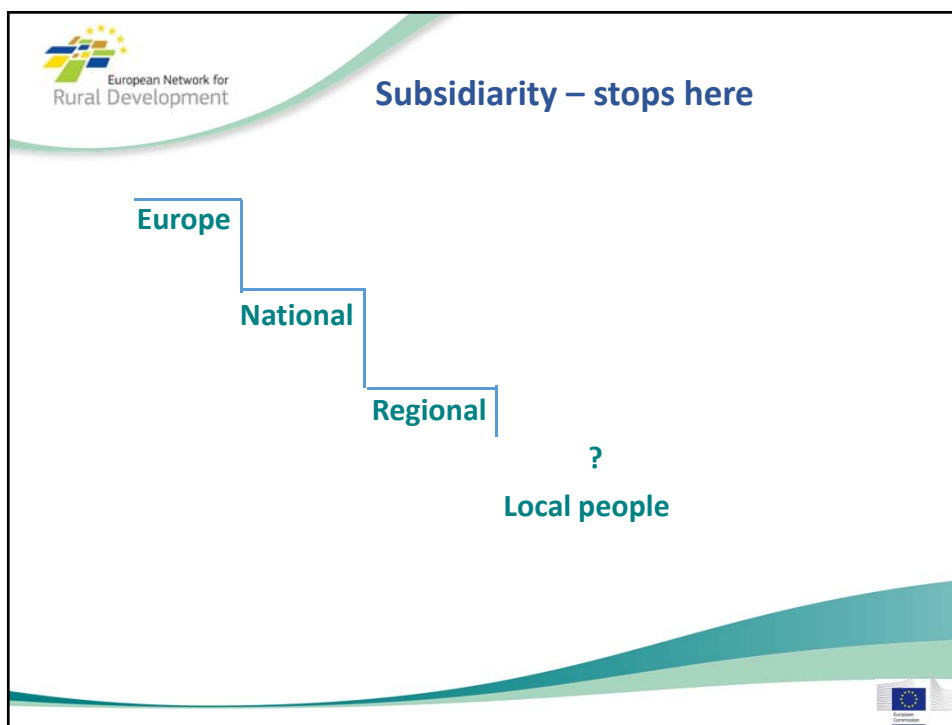
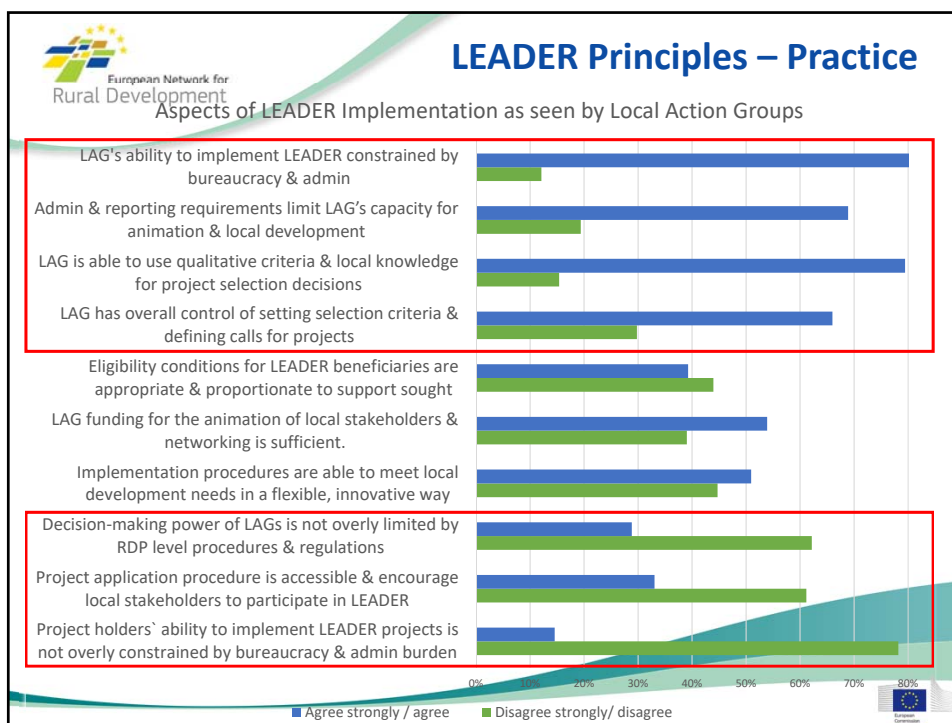
More engagement with **all the delivery chain actors** = simpler, smarter outcomes

**Achievements of LEADER + its role in dealing with key rural challenges**




#RNSteeringGroup







 **P4 – Smart and competitive rural areas**

Bring together both the **economic** and **service** aspects of **Smart Villages**.


**PROOFING POLICY INSTRUMENTS**

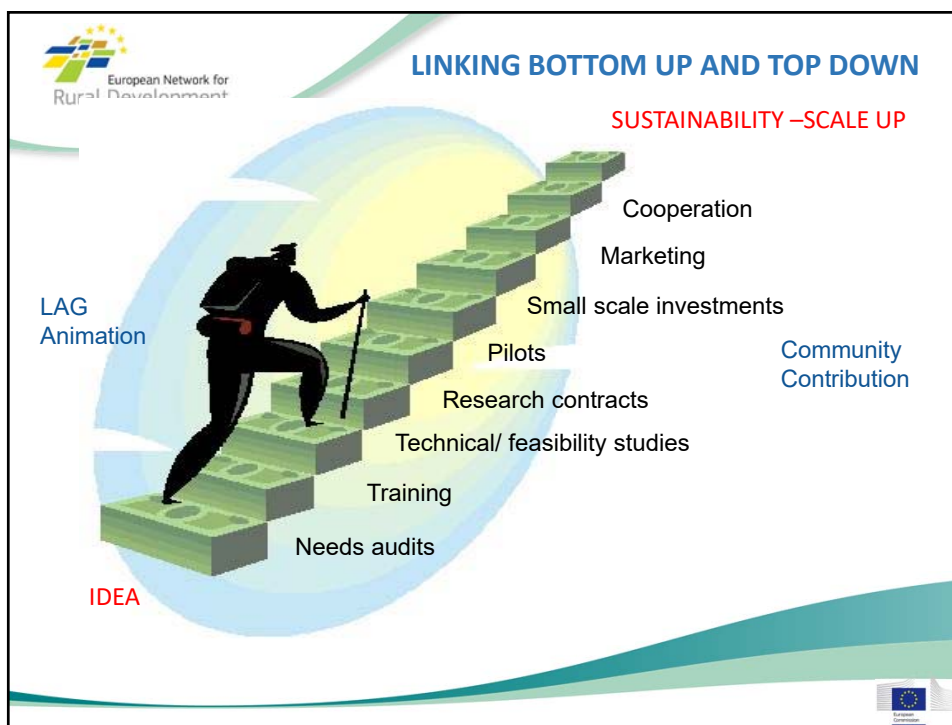
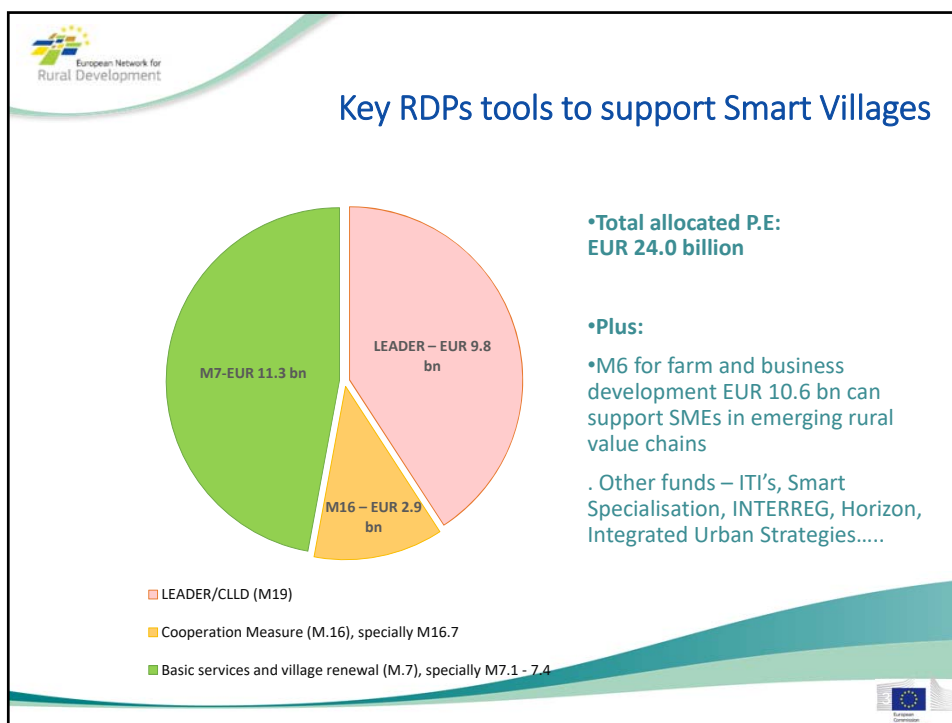
how existing policy instruments and funds (both EAFRD and others) can be used in a more integrated way for Smart Villages, including those towards digital innovation.

**PRACTICAL ORIENTATIONS (TRANSFER OF PRACTICES)**


between those MS and regions that are relatively advanced in developing Smart Villages and others that are interested in doing so.

Up to 4 TG meetings / Option for ENRD Seminar (May/June 2019 TBC)









 European Network for Rural Development

## Examples of projects




**Social Care**

- IMPROVE (SE) – *Distance care*
- SAFETY AT HOME (FI) – *Distance care*




**Education and training**

- WAB (FR) – *E-learning*
- Digital training for farmers (AT) – *E-learning*




**Mobility and logistics**


- Reseau Pouce (FR) – *Car Sharing*
- La Exclusiva (ES) – *Smart logistics*




**Renewable Energy**

- ENFOOC (ES) – *Energy Saving*
- Smart Rural Grids (ES) – *Energy distribution*
- Bioenergy Villages



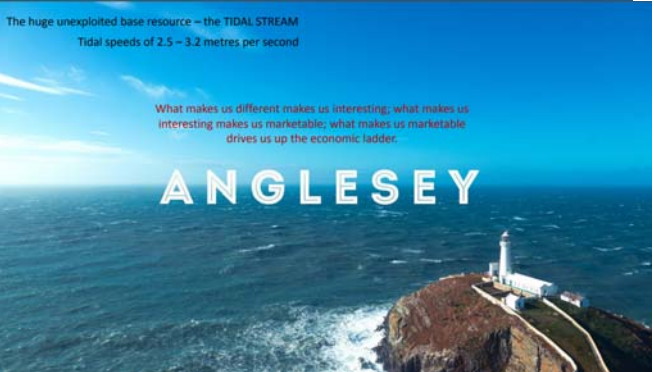
 European Network for Rural Development

 Menter Môn Cyf

The huge unexploited base resource – the TIDAL STREAM  
Tidal speeds of 2.5 – 3.2 metres per second

What makes us different makes us interesting; what makes us interesting makes us marketable; what makes us marketable drives us up the economic ladder.


# ANGLESEY



Local Innovation = Little things

Progressive development = big things

- Communities of interest around food, tourism, energy
- Seed funding from LEADER + Horizon + ESI funds
- Special purpose vehicle – for €35 m tidal energy project
- ERDF grants

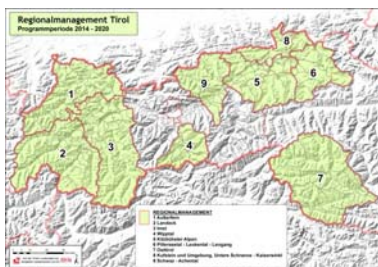




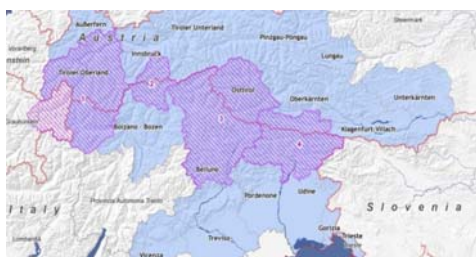
## Tyrol/ Austria – integration and multilevel governance

All EU and national programmes related to local development are managed through local partnerships according to the principles of CLLD

### Domestic LEADER/ CLLD



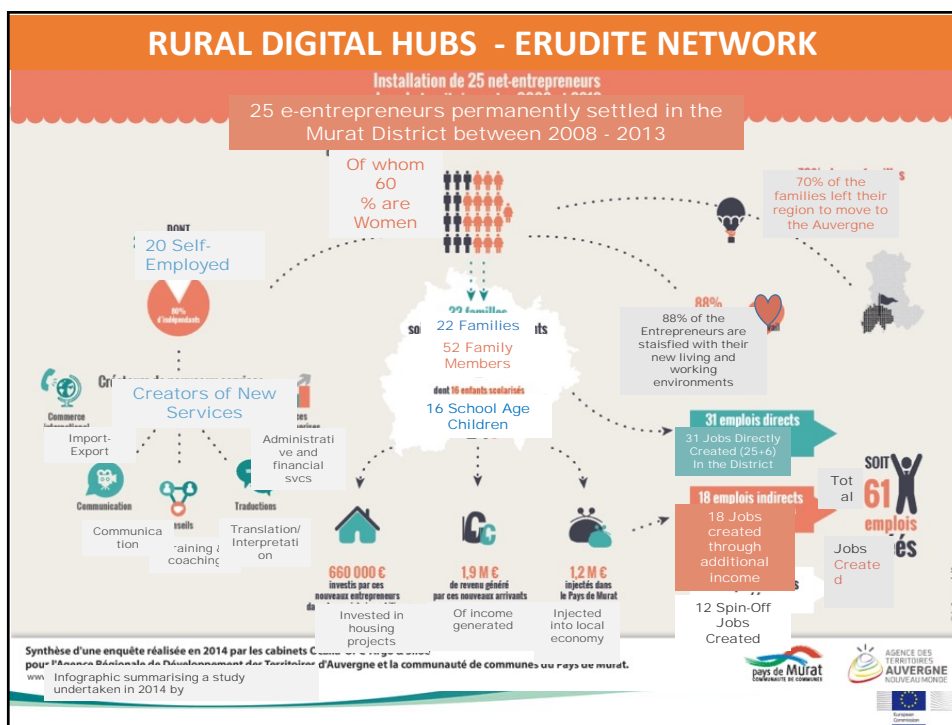
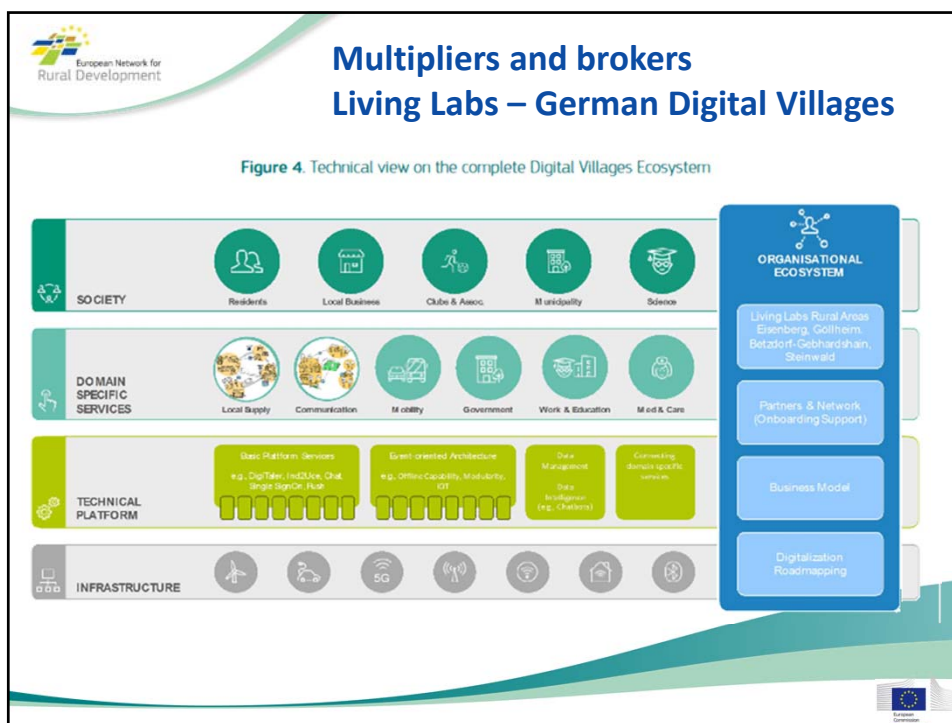
### Crossborder LEADER /CLLD

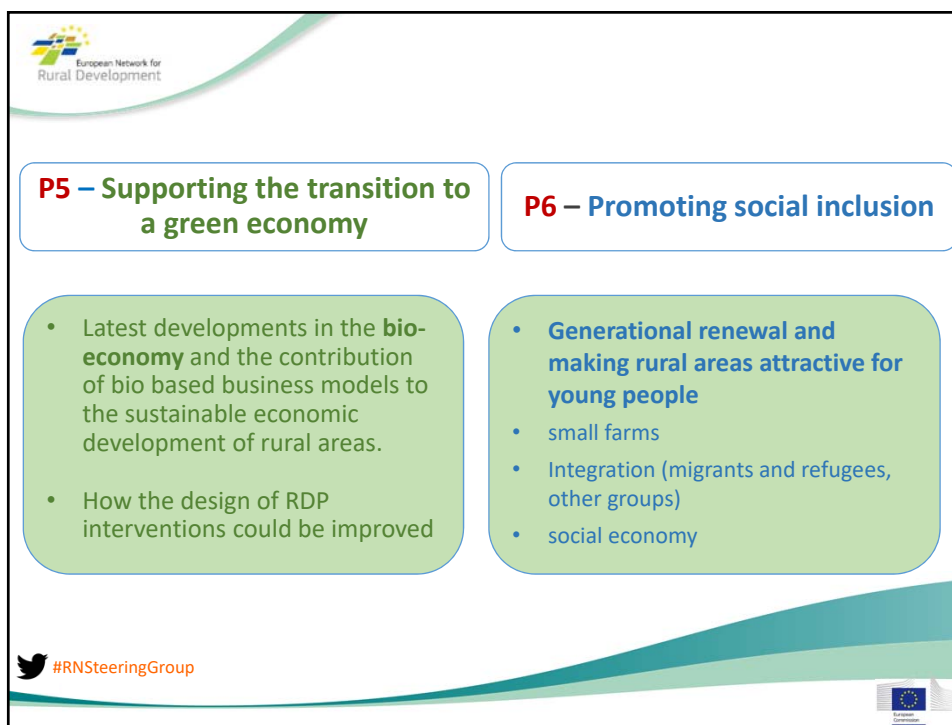
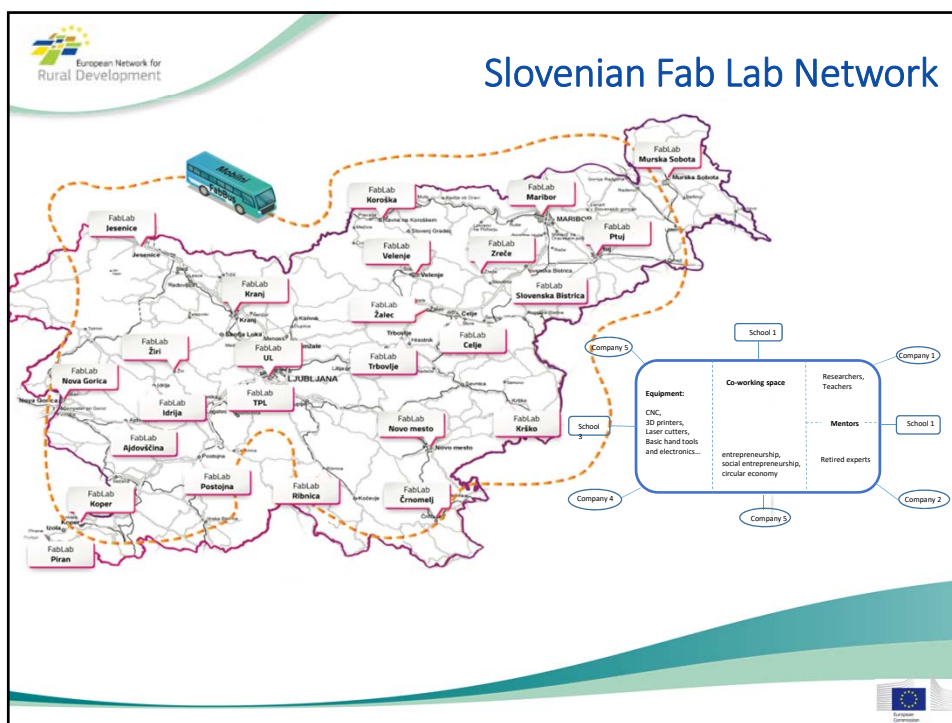


## Bottom-up and top down in Tyrol

1. **Platform** of all relevant stakeholders on local level involved in all programmes established at local level
2. **One stop shop** for local management of all programmes – avoiding double structures on local level and coordination on regional level => creating linkages
3. **Governance of policy makers.** One department ensures cooperation between regional and local level – working towards the same goal









**Thank you for your attention!**

[www.enrd.ec.europa.eu](http://www.enrd.ec.europa.eu)

**ENRD Contact Point**

Rue de la Loi / Wetstraat, 38 (bte 4)

1040 Bruxelles/Brussel

BELGIQUE/BELGIË

Tel. +32 2 801 38 00

[info@enrd.eu](mailto:info@enrd.eu)

